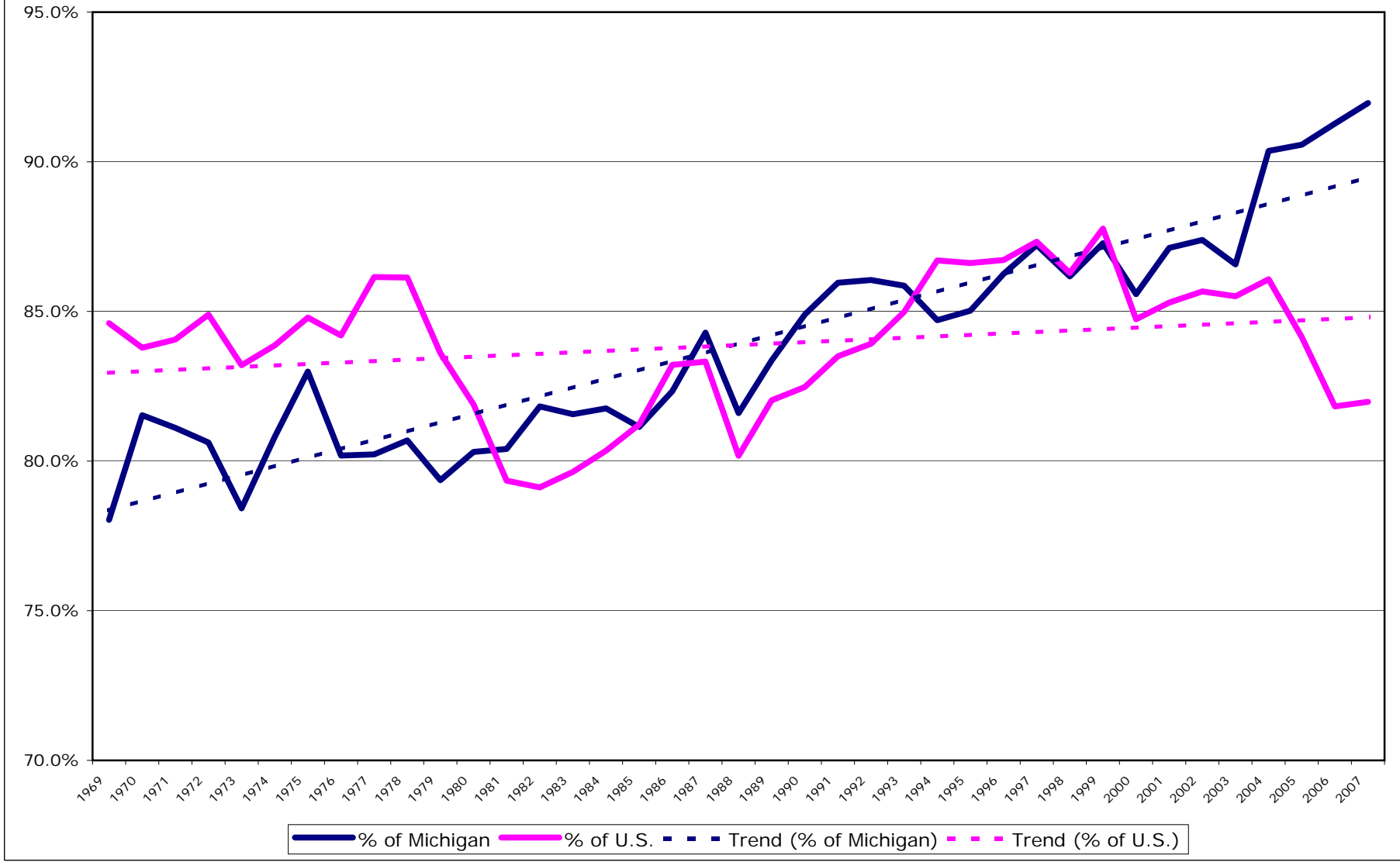


Northwest Lower Michigan Per Capita Income (PCI)



Regional Economic Information System (Bureau of Economic Analysis)
Personal Income and Per Capita Income

Line Title	Area Name	1969	1970	1971	1972
Personal income (\$000)	United States [00000]	772,235,000	832,429,000	897,952,000	987,137,000
Population (persons)		201,298,000	203,798,722	206,817,509	209,274,882
Per capita personal income (dollars)		3,836	4,085	4,342	4,717
Personal income (\$000)	Michigan state total [26000]	36,523,425	37,346,103	40,371,636	44,823,928
Population (persons)		8,781,000	8,896,558	8,971,835	9,024,681
Per capita personal income (dollars)		4,159	4,198	4,500	4,967
% of U.S.		108.4%	102.8%	103.6%	105.3%
Personal income (\$000)	Antrim, Michigan [26009]	38,405	40,301	44,424	51,129
Population (persons)		11,562	12,757	13,292	13,595
Per capita personal income (dollars)		3,322	3,159	3,342	3,761
% of Michigan		79.9%	75.3%	74.3%	75.7%
% of U.S.		86.6%	77.3%	77.0%	79.7%
Personal income (\$000)	Benzie, Michigan [26019]	26,256	29,048	32,319	35,954
Population (persons)		8,345	8,587	8,620	8,846
Per capita personal income (dollars)		3,146	3,383	3,749	4,064
% of Michigan		75.6%	80.6%	83.3%	81.8%
% of U.S.		82.0%	82.8%	86.3%	86.2%
Personal income (\$000)	Charlevoix, Michigan [26029]	48,878	52,330	57,776	66,383
Population (persons)		16,589	16,657	17,132	17,094
Per capita personal income (dollars)		2,946	3,142	3,372	3,883
% of Michigan		70.8%	74.8%	74.9%	78.2%
% of U.S.		76.8%	76.9%	77.7%	82.3%
Personal income (\$000)	Emmet, Michigan [26047]	63,002	68,400	76,571	86,108
Population (persons)		17,695	18,507	19,319	19,661
Per capita personal income (dollars)		3,560	3,696	3,964	4,380
% of Michigan		85.6%	88.0%	88.1%	88.2%
% of U.S.		92.8%	90.5%	91.3%	92.9%
Personal income (\$000)	Grand Traverse, Michigan [26055]	140,154	153,276	167,724	187,298
Population (persons)		40,014	39,443	40,849	42,445
Per capita personal income (dollars)		3,503	3,886	4,106	4,413
% of Michigan		84.2%	92.6%	91.2%	88.8%
% of U.S.		91.3%	95.1%	94.6%	93.6%

Regional Economic Information System (Bureau of Economic Analysis)
Personal Income and Per Capita Income

Line Title	Area Name	1973	1974	1975	1976
Personal income (\$000)	United States [00000]	1,105,605,000	1,217,556,000	1,329,892,000	1,469,467,000
Population (persons)		211,349,205	213,333,635	215,456,585	217,553,859
Per capita personal income (dollars)		5,231	5,707	6,172	6,754
Personal income (\$000)	Michigan state total [26000]	50,345,066	53,956,247	57,434,514	64,660,268
Population (persons)		9,071,764	9,109,374	9,107,840	9,117,481
Per capita personal income (dollars)		5,550	5,923	6,306	7,092
% of U.S.		106.1%	103.8%	102.2%	105.0%
Personal income (\$000)	Antrim, Michigan [26009]	58,546	66,761	72,166	81,411
Population (persons)		14,103	14,905	15,310	15,542
Per capita personal income (dollars)		4,151	4,479	4,714	5,238
% of Michigan		74.8%	75.6%	74.8%	73.9%
% of U.S.		79.4%	78.5%	76.4%	77.6%
Personal income (\$000)	Benzie, Michigan [26019]	40,701	45,488	50,563	56,474
Population (persons)		9,513	9,810	10,068	10,504
Per capita personal income (dollars)		4,278	4,637	5,022	5,376
% of Michigan		77.1%	78.3%	79.6%	75.8%
% of U.S.		81.8%	81.3%	81.4%	79.6%
Personal income (\$000)	Charlevoix, Michigan [26029]	74,944	83,473	93,546	105,730
Population (persons)		17,922	18,019	18,468	18,955
Per capita personal income (dollars)		4,182	4,632	5,065	5,578
% of Michigan		75.4%	78.2%	80.3%	78.7%
% of U.S.		79.9%	81.2%	82.1%	82.6%
Personal income (\$000)	Emmet, Michigan [26047]	97,142	108,478	119,164	134,288
Population (persons)		20,481	21,127	21,745	22,004
Per capita personal income (dollars)		4,743	5,135	5,480	6,103
% of Michigan		85.5%	86.7%	86.9%	86.1%
% of U.S.		90.7%	90.0%	88.8%	90.4%
Personal income (\$000)	Grand Traverse, Michigan [26055]	212,107	239,548	273,386	309,481
Population (persons)		44,366	46,096	46,329	47,692
Per capita personal income (dollars)		4,781	5,197	5,901	6,489
% of Michigan		86.1%	87.7%	93.6%	91.5%
% of U.S.		91.4%	91.1%	95.6%	96.1%

Regional Economic Information System (Bureau of Economic Analysis)
Personal Income and Per Capita Income

Line Title	Area Name	1977	1978	1979	1980
Personal income (\$000)	United States [00000]	1,627,310,000	1,831,117,000	2,053,827,000	2,298,255,000
Population (persons)		219,760,875	222,098,244	224,568,579	227,224,719
Per capita personal income (dollars)		7,405	8,245	9,146	10,114
Personal income (\$000)	Michigan state total [26000]	72,818,361	80,985,603	89,110,375	95,459,628
Population (persons)		9,157,247	9,201,953	9,248,814	9,255,553
Per capita personal income (dollars)		7,952	8,801	9,635	10,314
% of U.S.		107.4%	106.7%	105.3%	102.0%
Personal income (\$000)	Antrim, Michigan [26009]	94,551	108,957	123,546	135,428
Population (persons)		15,782	16,082	16,430	16,277
Per capita personal income (dollars)		5,991	6,775	7,520	8,320
% of Michigan		75.3%	77.0%	78.0%	80.7%
% of U.S.		80.9%	82.2%	82.2%	82.3%
Personal income (\$000)	Benzie, Michigan [26019]	65,274	73,455	81,325	86,961
Population (persons)		10,750	10,845	11,160	11,262
Per capita personal income (dollars)		6,072	6,773	7,287	7,722
% of Michigan		76.4%	77.0%	75.6%	74.9%
% of U.S.		82.0%	82.1%	79.7%	76.3%
Personal income (\$000)	Charlevoix, Michigan [26029]	120,408	135,687	151,065	164,896
Population (persons)		19,379	19,290	19,719	19,973
Per capita personal income (dollars)		6,213	7,034	7,661	8,256
% of Michigan		78.1%	79.9%	79.5%	80.0%
% of U.S.		83.9%	85.3%	83.8%	81.6%
Personal income (\$000)	Emmet, Michigan [26047]	150,498	168,765	189,036	209,482
Population (persons)		22,143	22,565	22,938	23,114
Per capita personal income (dollars)		6,797	7,479	8,241	9,063
% of Michigan		85.5%	85.0%	85.5%	87.9%
% of U.S.		91.8%	90.7%	90.1%	89.6%
Personal income (\$000)	Grand Traverse, Michigan [26055]	355,218	411,562	459,667	506,783
Population (persons)		49,343	51,308	53,526	55,337
Per capita personal income (dollars)		7,199	8,021	8,588	9,158
% of Michigan		90.5%	91.1%	89.1%	88.8%
% of U.S.		97.2%	97.3%	93.9%	90.5%

Regional Economic Information System (Bureau of Economic Analysis)
Personal Income and Per Capita Income

Line Title	Area Name	1981	1982	1983	1984
Personal income (\$000)	United States [00000]	2,580,600,000	2,764,886,000	2,949,883,000	3,275,805,000
Population (persons)		229,465,744	231,664,432	233,792,014	235,824,907
Per capita personal income (dollars)		11,246	11,935	12,618	13,891
Personal income (\$000)	Michigan state total [26000]	102,205,748	105,189,121	111,467,786	123,531,159
Population (persons)		9,209,287	9,115,196	9,047,764	9,049,454
Per capita personal income (dollars)		11,098	11,540	12,320	13,651
% of U.S.		98.7%	96.7%	97.6%	98.3%
Personal income (\$000)	Antrim, Michigan [26009]	147,230	150,887	155,350	171,488
Population (persons)		16,572	16,668	16,720	16,837
Per capita personal income (dollars)		8,884	9,052	9,291	10,185
% of Michigan		80.1%	78.4%	75.4%	74.6%
% of U.S.		79.0%	75.8%	73.6%	73.3%
Personal income (\$000)	Benzie, Michigan [26019]	96,801	103,965	110,507	121,981
Population (persons)		11,471	11,260	11,412	11,312
Per capita personal income (dollars)		8,439	9,233	9,683	10,783
% of Michigan		76.0%	80.0%	78.6%	79.0%
% of U.S.		75.0%	77.4%	76.7%	77.6%
Personal income (\$000)	Charlevoix, Michigan [26029]	176,507	184,671	194,615	210,060
Population (persons)		20,196	19,918	19,855	19,816
Per capita personal income (dollars)		8,740	9,272	9,802	10,601
% of Michigan		78.8%	80.3%	79.6%	77.7%
% of U.S.		77.7%	77.7%	77.7%	76.3%
Personal income (\$000)	Emmet, Michigan [26047]	226,314	242,295	259,491	287,140
Population (persons)		23,550	23,374	23,347	23,551
Per capita personal income (dollars)		9,610	10,366	11,115	12,192
% of Michigan		86.6%	89.8%	90.2%	89.3%
% of U.S.		85.5%	86.9%	88.1%	87.8%
Personal income (\$000)	Grand Traverse, Michigan [26055]	559,095	591,842	632,336	724,431
Population (persons)		56,969	56,922	56,877	57,415
Per capita personal income (dollars)		9,814	10,397	11,118	12,617
% of Michigan		88.4%	90.1%	90.2%	92.4%
% of U.S.		87.3%	87.1%	88.1%	90.8%

Regional Economic Information System (Bureau of Economic Analysis)
Personal Income and Per Capita Income

Line Title	Area Name	1985	1986	1987	1988
Personal income (\$000)	United States [00000]	3,511,344,000	3,708,199,000	3,934,655,000	4,237,460,000
Population (persons)		237,923,734	240,132,831	242,288,936	244,499,004
Per capita personal income (dollars)		14,758	15,442	16,240	17,331
Personal income (\$000)	Michigan state total [26000]	134,082,561	142,458,517	147,486,499	156,960,607
Population (persons)		9,076,287	9,127,774	9,187,484	9,218,002
Per capita personal income (dollars)		14,773	15,607	16,053	17,028
% of U.S.		100.1%	101.1%	98.8%	98.3%
Personal income (\$000)	Antrim, Michigan [26009]	190,285	201,747	211,447	219,812
Population (persons)		16,964	17,062	17,232	17,707
Per capita personal income (dollars)		11,217	11,824	12,271	12,414
% of Michigan		75.9%	75.8%	76.4%	72.9%
% of U.S.		76.0%	76.6%	75.6%	71.6%
Personal income (\$000)	Benzie, Michigan [26019]	133,614	140,051	148,184	155,507
Population (persons)		11,475	11,521	11,692	11,882
Per capita personal income (dollars)		11,644	12,156	12,674	13,088
% of Michigan		78.8%	77.9%	79.0%	76.9%
% of U.S.		78.9%	78.7%	78.0%	75.5%
Personal income (\$000)	Charlevoix, Michigan [26029]	225,142	240,619	257,767	286,416
Population (persons)		19,837	20,111	20,453	20,915
Per capita personal income (dollars)		11,350	11,965	12,603	13,694
% of Michigan		76.8%	76.7%	78.5%	80.4%
% of U.S.		76.9%	77.5%	77.6%	79.0%
Personal income (\$000)	Emmet, Michigan [26047]	309,526	333,644	357,416	386,951
Population (persons)		23,621	23,637	23,855	24,426
Per capita personal income (dollars)		13,104	14,115	14,983	15,842
% of Michigan		88.7%	90.4%	93.3%	93.0%
% of U.S.		88.8%	91.4%	92.3%	91.4%
Personal income (\$000)	Grand Traverse, Michigan [26055]	802,303	893,721	967,859	980,736
Population (persons)		58,601	59,807	61,166	63,066
Per capita personal income (dollars)		13,691	14,943	15,823	15,551
% of Michigan		92.7%	95.7%	98.6%	91.3%
% of U.S.		92.8%	96.8%	97.4%	89.7%

Regional Economic Information System (Bureau of Economic Analysis)
Personal Income and Per Capita Income

Line Title	Area Name	1989	1990	1991	1992
Personal income (\$000)	United States [00000]	4,571,133,000	4,861,936,000	5,032,196,000	5,349,384,000
Population (persons)		246,819,222	249,622,814	252,980,941	256,514,224
Per capita personal income (dollars)		18,520	19,477	19,892	20,854
Personal income (\$000)	Michigan state total [26000]	168,637,451	176,188,551	181,654,702	192,788,275
Population (persons)		9,253,298	9,311,319	9,400,446	9,479,065
Per capita personal income (dollars)		18,225	18,922	19,324	20,338
% of U.S.		98.4%	97.2%	97.1%	97.5%
Personal income (\$000)	Antrim, Michigan [26009]	249,100	269,040	278,419	295,967
Population (persons)		17,910	18,258	18,650	18,945
Per capita personal income (dollars)		13,908	14,735	14,929	15,622
% of Michigan		76.3%	77.9%	77.3%	76.8%
% of U.S.		75.1%	75.7%	75.1%	74.9%
Personal income (\$000)	Benzie, Michigan [26019]	167,845	177,432	187,535	202,231
Population (persons)		11,998	12,251	12,411	12,654
Per capita personal income (dollars)		13,989	14,483	15,110	15,982
% of Michigan		76.8%	76.5%	78.2%	78.6%
% of U.S.		75.5%	74.4%	76.0%	76.6%
Personal income (\$000)	Charlevoix, Michigan [26029]	313,766	344,775	370,468	396,452
Population (persons)		21,149	21,593	22,020	22,494
Per capita personal income (dollars)		14,836	15,967	16,824	17,625
% of Michigan		81.4%	84.4%	87.1%	86.7%
% of U.S.		80.1%	82.0%	84.6%	84.5%
Personal income (\$000)	Emmet, Michigan [26047]	443,195	476,208	497,386	526,640
Population (persons)		24,701	25,199	25,910	26,469
Per capita personal income (dollars)		17,942	18,898	19,197	19,896
% of Michigan		98.4%	99.9%	99.3%	97.8%
% of U.S.		96.9%	97.0%	96.5%	95.4%
Personal income (\$000)	Grand Traverse, Michigan [26055]	1,072,877	1,168,988	1,213,490	1,323,045
Population (persons)		63,611	64,533	65,754	67,420
Per capita personal income (dollars)		16,866	18,115	18,455	19,624
% of Michigan		92.5%	95.7%	95.5%	96.5%
% of U.S.		91.1%	93.0%	92.8%	94.1%

Regional Economic Information System (Bureau of Economic Analysis)
Personal Income and Per Capita Income

Line Title	Area Name	1993	1994	1995	1996
Personal income (\$000)	United States [00000]	5,548,121,000	5,833,906,000	6,144,741,000	6,512,485,000
Population (persons)		259,918,588	263,125,821	266,278,393	269,394,284
Per capita personal income (dollars)		21,346	22,172	23,076	24,175
Personal income (\$000)	Michigan state total [26000]	201,574,154	217,812,189	227,465,905	237,193,029
Population (persons)		9,540,114	9,597,737	9,676,211	9,758,645
Per capita personal income (dollars)		21,129	22,694	23,508	24,306
% of U.S.		99.0%	102.4%	101.9%	100.5%
Personal income (\$000)	Antrim, Michigan [26009]	319,086	349,682	398,809	432,692
Population (persons)		19,480	19,843	20,468	20,986
Per capita personal income (dollars)		16,380	17,622	19,485	20,618
% of Michigan		77.5%	77.7%	82.9%	84.8%
% of U.S.		76.7%	79.5%	84.4%	85.3%
Personal income (\$000)	Benzie, Michigan [26019]	220,983	242,790	261,543	283,581
Population (persons)		13,009	13,451	13,927	14,241
Per capita personal income (dollars)		16,987	18,050	18,780	19,913
% of Michigan		80.4%	79.5%	79.9%	81.9%
% of U.S.		79.6%	81.4%	81.4%	82.4%
Personal income (\$000)	Charlevoix, Michigan [26029]	418,684	465,143	499,440	538,016
Population (persons)		22,953	23,463	23,959	24,282
Per capita personal income (dollars)		18,241	19,825	20,846	22,157
% of Michigan		86.3%	87.4%	88.7%	91.2%
% of U.S.		85.5%	89.4%	90.3%	91.7%
Personal income (\$000)	Emmet, Michigan [26047]	557,097	596,451	630,815	669,084
Population (persons)		27,060	27,781	28,411	29,133
Per capita personal income (dollars)		20,587	21,470	22,203	22,967
% of Michigan		97.4%	94.6%	94.4%	94.5%
% of U.S.		96.4%	96.8%	96.2%	95.0%
Personal income (\$000)	Grand Traverse, Michigan [26055]	1,388,482	1,486,526	1,579,338	1,684,473
Population (persons)		68,817	69,929	71,300	72,739
Per capita personal income (dollars)		20,176	21,258	22,151	23,158
% of Michigan		95.5%	93.7%	94.2%	95.3%
% of U.S.		94.5%	95.9%	96.0%	95.8%

Regional Economic Information System (Bureau of Economic Analysis)
Personal Income and Per Capita Income

Line Title	Area Name	1997	1998	1999	2000
Personal income (\$000)	United States [00000]	6,907,332,000	7,415,709,000	7,796,137,000	8,422,074,000
Population (persons)		272,646,925	275,854,104	279,040,168	282,194,308
Per capita personal income (dollars)		25,334	26,883	27,939	29,845
Personal income (\$000)	Michigan state total [26000]	248,821,337	265,097,783	278,061,682	294,226,742
Population (persons)		9,809,051	9,847,942	9,897,116	9,955,417
Per capita personal income (dollars)		25,367	26,919	28,095	29,554
% of U.S.		100.1%	100.1%	100.6%	99.0%
Personal income (\$000)	Antrim, Michigan [26009]	469,779	508,722	551,735	568,453
Population (persons)		21,423	21,992	22,556	23,260
Per capita personal income (dollars)		21,929	23,132	24,461	24,439
% of Michigan		86.4%	85.9%	87.1%	82.7%
% of U.S.		86.6%	86.0%	87.6%	81.9%
Personal income (\$000)	Benzie, Michigan [26019]	311,841	334,041	359,286	380,997
Population (persons)		14,662	15,118	15,652	16,107
Per capita personal income (dollars)		21,269	22,096	22,955	23,654
% of Michigan		83.8%	82.1%	81.7%	80.0%
% of U.S.		84.0%	82.2%	82.2%	79.3%
Personal income (\$000)	Charlevoix, Michigan [26029]	578,753	604,116	645,073	681,931
Population (persons)		24,758	25,245	25,806	26,172
Per capita personal income (dollars)		23,376	23,930	24,997	26,056
% of Michigan		92.2%	88.9%	89.0%	88.2%
% of U.S.		92.3%	89.0%	89.5%	87.3%
Personal income (\$000)	Emmet, Michigan [26047]	709,818	758,110	809,601	866,164
Population (persons)		29,871	30,403	30,967	31,552
Per capita personal income (dollars)		23,763	24,935	26,144	27,452
% of Michigan		93.7%	92.6%	93.1%	92.9%
% of U.S.		93.8%	92.8%	93.6%	92.0%
Personal income (\$000)	Grand Traverse, Michigan [26055]	1,821,385	1,981,039	2,154,838	2,254,827
Population (persons)		73,765	75,325	76,710	78,002
Per capita personal income (dollars)		24,692	26,300	28,091	28,907
% of Michigan		97.3%	97.7%	100.0%	97.8%
% of U.S.		97.5%	97.8%	100.5%	96.9%

Regional Economic Information System (Bureau of Economic Analysis)
Personal Income and Per Capita Income

Line Title	Area Name	2001	2002	2003	2004
Personal income (\$000)	United States [00000]	8,716,992,000	8,872,871,000	9,150,320,000	9,711,363,000
Population (persons)		285,112,030	287,888,021	290,447,644	293,191,511
Per capita personal income (dollars)		30,574	30,821	31,504	33,123
Personal income (\$000)	Michigan state total [26000]	299,542,431	303,465,006	313,503,162	318,735,899
Population (persons)		10,006,963	10,043,737	10,075,217	10,102,720
Per capita personal income (dollars)		29,933	30,214	31,116	31,550
% of U.S.		97.9%	98.0%	98.8%	95.3%
Personal income (\$000)	Antrim, Michigan [26009]	613,754	613,946	628,297	639,746
Population (persons)		23,486	23,779	24,122	24,260
Per capita personal income (dollars)		26,133	25,819	26,047	26,370
% of Michigan		87.3%	85.5%	83.7%	83.6%
% of U.S.		85.5%	83.8%	82.7%	79.6%
Personal income (\$000)	Benzie, Michigan [26019]	405,663	414,473	414,418	446,796
Population (persons)		16,467	16,729	17,125	17,256
Per capita personal income (dollars)		24,635	24,776	24,200	25,892
% of Michigan		82.3%	82.0%	77.8%	82.1%
% of U.S.		80.6%	80.4%	76.8%	78.2%
Personal income (\$000)	Charlevoix, Michigan [26029]	727,910	749,311	756,120	828,151
Population (persons)		26,408	26,488	26,567	26,480
Per capita personal income (dollars)		27,564	28,289	28,461	31,275
% of Michigan		92.1%	93.6%	91.5%	99.1%
% of U.S.		90.2%	91.8%	90.3%	94.4%
Personal income (\$000)	Emmet, Michigan [26047]	940,127	985,511	1,007,894	1,095,740
Population (persons)		32,129	32,484	32,683	33,206
Per capita personal income (dollars)		29,261	30,338	30,838	32,998
% of Michigan		97.8%	100.4%	99.1%	104.6%
% of U.S.		95.7%	98.4%	97.9%	99.6%
Personal income (\$000)	Grand Traverse, Michigan [26055]	2,344,249	2,374,662	2,473,973	2,604,205
Population (persons)		79,916	80,988	81,772	82,639
Per capita personal income (dollars)		29,334	29,321	30,255	31,513
% of Michigan		98.0%	97.0%	97.2%	99.9%
% of U.S.		95.9%	95.1%	96.0%	95.1%

Regional Economic Information System (Bureau of Economic Analysis)
Personal Income and Per Capita Income

Line Title	Area Name	2005	2006	2007
Personal income (\$000)	United States [00000]	10,252,973,000	10,978,053,000	11,634,322,000
Population (persons)		295,560,549	298,362,973	301,290,332
Per capita personal income (dollars)		34,690	36,794	38,615
Personal income (\$000)	Michigan state total [26000]	325,292,871	332,617,185	345,940,023
Population (persons)		10,093,266	10,083,878	10,049,790
Per capita personal income (dollars)		32,229	32,985	34,423
% of U.S.		92.9%	89.6%	89.1%
Personal income (\$000)	Antrim, Michigan [26009]	656,588	666,712	705,975
Population (persons)		24,219	24,241	24,239
Per capita personal income (dollars)		27,110	27,503	29,126
% of Michigan		84.1%	83.4%	84.6%
% of U.S.		78.1%	74.7%	75.4%
Personal income (\$000)	Benzie, Michigan [26019]	450,804	466,885	492,358
Population (persons)		17,466	17,601	17,481
Per capita personal income (dollars)		25,810	26,526	28,165
% of Michigan		80.1%	80.4%	81.8%
% of U.S.		74.4%	72.1%	72.9%
Personal income (\$000)	Charlevoix, Michigan [26029]	847,401	878,485	922,922
Population (persons)		26,360	26,133	26,142
Per capita personal income (dollars)		32,147	33,616	35,304
% of Michigan		99.7%	101.9%	102.6%
% of U.S.		92.7%	91.4%	91.4%
Personal income (\$000)	Emmet, Michigan [26047]	1,119,164	1,127,221	1,198,577
Population (persons)		33,298	33,443	33,372
Per capita personal income (dollars)		33,611	33,706	35,916
% of Michigan		104.3%	102.2%	104.3%
% of U.S.		96.9%	91.6%	93.0%
Personal income (\$000)	Grand Traverse, Michigan [26055]	2,702,054	2,875,043	3,033,402
Population (persons)		83,482	84,408	85,401
Per capita personal income (dollars)		32,367	34,061	35,520
% of Michigan		100.4%	103.3%	103.2%
% of U.S.		93.3%	92.6%	92.0%

Regional Economic Information System (Bureau of Economic Analysis)
Personal Income and Per Capita Income

Line Title	Area Name	1969	1970	1971	1972
Personal income (\$000)	Kalkaska, Michigan [26079]	16,828	18,221	19,022	22,032
Population (persons)		5,530	5,452	5,635	5,957
Per capita personal income (dollars)		3,043	3,342	3,376	3,699
% of Michigan		73.2%	79.6%	75.0%	74.5%
% of U.S.		79.3%	81.8%	77.8%	78.4%
Personal income (\$000)	Leelanau, Michigan [26089]	36,869	40,085	44,849	51,101
Population (persons)		10,054	10,868	10,921	11,632
Per capita personal income (dollars)		3,667	3,688	4,107	4,393
% of Michigan		88.2%	87.9%	91.3%	88.4%
% of U.S.		95.6%	90.3%	94.6%	93.1%
Personal income (\$000)	Manistee, Michigan [26101]	62,140	66,195	72,476	79,633
Population (persons)		19,705	20,515	21,126	21,343
Per capita personal income (dollars)		3,154	3,227	3,431	3,731
% of Michigan		75.8%	76.9%	76.2%	75.1%
% of U.S.		82.2%	79.0%	79.0%	79.1%
Personal income (\$000)	Missaukee, Michigan [26113]	17,736	19,819	22,042	25,617
Population (persons)		6,736	7,274	7,863	7,595
Per capita personal income (dollars)		2,633	2,725	2,803	3,373
% of Michigan		63.3%	64.9%	62.3%	67.9%
% of U.S.		68.6%	66.7%	64.6%	71.5%
Personal income (\$000)	Wexford, Michigan [26165]	55,165	59,456	65,404	72,201
Population (persons)		19,504	19,796	20,345	21,009
Per capita personal income (dollars)		2,828	3,003	3,215	3,437
% of Michigan		68.0%	71.5%	71.4%	69.2%
% of U.S.		73.7%	73.5%	74.0%	72.9%
Personal income (\$000)	Cadillac, MI MicroSA	72,901	79,275	87,446	97,818
Population (persons)	(counties of Missaukee and	26,240	27,070	28,208	28,604
Per capita personal income (dollars)	Wexford)	2,778	2,929	3,100	3,420
% of Michigan		66.8%	69.8%	68.9%	68.9%
% of U.S.		72.4%	71.7%	71.4%	72.5%
Personal income (\$000)	Traverse City, MI MicroSA	220,107	240,630	263,914	296,385
Population (persons)	(counties of Benzie, Grand	63,943	64,350	66,025	68,880
Per capita personal income (dollars)	Traverse, Kalkaska and	3,442	3,739	3,997	4,303
% of Michigan	Leelanau)	82.8%	89.1%	88.8%	86.6%
% of U.S.		89.7%	91.5%	92.1%	91.2%

Regional Economic Information System (Bureau of Economic Analysis)
Personal Income and Per Capita Income

Line Title	Area Name	1973	1974	1975	1976
Personal income (\$000)	Kalkaska, Michigan [26079]	26,931	32,753	42,844	47,494
Population (persons)		6,415	6,934	7,496	10,236
Per capita personal income (dollars)		4,198	4,724	5,716	4,640
% of Michigan		75.6%	79.8%	90.6%	65.4%
% of U.S.		80.3%	82.8%	92.6%	68.7%
Personal income (\$000)	Leelanau, Michigan [26089]	58,416	68,814	70,993	79,866
Population (persons)		12,253	12,364	12,632	12,952
Per capita personal income (dollars)		4,767	5,566	5,620	6,166
% of Michigan		85.9%	94.0%	89.1%	86.9%
% of U.S.		91.1%	97.5%	91.1%	91.3%
Personal income (\$000)	Manistee, Michigan [26101]	83,197	94,487	106,782	118,972
Population (persons)		21,465	21,449	22,068	22,387
Per capita personal income (dollars)		3,876	4,405	4,839	5,314
% of Michigan		69.8%	74.4%	76.7%	74.9%
% of U.S.		74.1%	77.2%	78.4%	78.7%
Personal income (\$000)	Missaukee, Michigan [26113]	30,889	33,360	38,108	42,246
Population (persons)		7,883	8,208	8,625	8,872
Per capita personal income (dollars)		3,918	4,064	4,418	4,762
% of Michigan		70.6%	68.6%	70.1%	67.1%
% of U.S.		74.9%	71.2%	71.6%	70.5%
Personal income (\$000)	Wexford, Michigan [26165]	84,776	93,854	104,011	118,003
Population (persons)		21,978	22,235	22,901	23,229
Per capita personal income (dollars)		3,857	4,221	4,542	5,080
% of Michigan		69.5%	71.3%	72.0%	71.6%
% of U.S.		73.7%	74.0%	73.6%	75.2%
Personal income (\$000)	Cadillac, MI MicroSA	115,665	127,214	142,119	160,249
Population (persons)	(counties of Missaukee and	29,861	30,443	31,526	32,101
Per capita personal income (dollars)	Wexford)	3,873	4,179	4,508	4,992
% of Michigan		69.8%	70.6%	71.5%	70.4%
% of U.S.		74.0%	73.2%	73.0%	73.9%
Personal income (\$000)	Traverse City, MI MicroSA	338,155	386,603	437,786	493,315
Population (persons)	(counties of Benzie, Grand	72,547	75,204	76,525	81,384
Per capita personal income (dollars)	Traverse, Kalkaska and	4,661	5,141	5,721	6,062
% of Michigan	Leelanau)	84.0%	86.8%	90.7%	85.5%
% of U.S.		89.1%	90.1%	92.7%	89.8%

Regional Economic Information System (Bureau of Economic Analysis)
Personal Income and Per Capita Income

Line Title	Area Name	1977	1978	1979	1980
Personal income (\$000)	Kalkaska, Michigan [26079]	53,633	58,766	67,301	74,065
Population (persons)		9,788	9,402	10,717	11,035
Per capita personal income (dollars)		5,479	6,250	6,280	6,712
% of Michigan		68.9%	71.0%	65.2%	65.1%
% of U.S.		74.0%	75.8%	68.7%	66.4%
Personal income (\$000)	Leelanau, Michigan [26089]	95,589	111,144	117,530	126,563
Population (persons)		13,254	13,540	14,270	14,090
Per capita personal income (dollars)		7,212	8,209	8,236	8,982
% of Michigan		90.7%	93.3%	85.5%	87.1%
% of U.S.		97.4%	99.6%	90.1%	88.8%
Personal income (\$000)	Manistee, Michigan [26101]	136,747	153,959	169,259	184,441
Population (persons)		22,578	22,986	23,039	23,029
Per capita personal income (dollars)		6,057	6,698	7,347	8,009
% of Michigan		76.2%	76.1%	76.3%	77.7%
% of U.S.		81.8%	81.2%	80.3%	79.2%
Personal income (\$000)	Missaukee, Michigan [26113]	45,247	51,070	58,596	65,812
Population (persons)		9,118	9,424	9,881	10,076
Per capita personal income (dollars)		4,962	5,419	5,930	6,532
% of Michigan		62.4%	61.6%	61.5%	63.3%
% of U.S.		67.0%	65.7%	64.8%	64.6%
Personal income (\$000)	Wexford, Michigan [26165]	132,858	145,005	161,747	180,318
Population (persons)		23,817	24,280	24,832	25,253
Per capita personal income (dollars)		5,578	5,972	6,514	7,140
% of Michigan		70.1%	67.9%	67.6%	69.2%
% of U.S.		75.3%	72.4%	71.2%	70.6%
Personal income (\$000)	Cadillac, MI MicroSA	178,105	196,075	220,343	246,130
Population (persons)	(counties of Missaukee and	32,935	33,704	34,713	35,329
Per capita personal income (dollars)	Wexford)	5,408	5,818	6,348	6,967
% of Michigan		68.0%	66.1%	65.9%	67.5%
% of U.S.		73.0%	70.6%	69.4%	68.9%
Personal income (\$000)	Traverse City, MI MicroSA	569,714	654,927	725,823	794,372
Population (persons)	(counties of Benzie, Grand	83,135	85,095	89,673	91,724
Per capita personal income (dollars)	Traverse, Kalkaska and	6,853	7,696	8,094	8,660
% of Michigan	Leelanau)	86.2%	87.4%	84.0%	84.0%
% of U.S.		92.5%	93.3%	88.5%	85.6%

Regional Economic Information System (Bureau of Economic Analysis)
Personal Income and Per Capita Income

Line Title	Area Name	1981	1982	1983	1984
Personal income (\$000)	Kalkaska, Michigan [26079]	85,334	90,823	95,721	107,145
Population (persons)		11,345	11,503	11,654	11,860
Per capita personal income (dollars)		7,522	7,896	8,214	9,034
% of Michigan		67.8%	68.4%	66.7%	66.2%
% of U.S.		66.9%	66.2%	65.1%	65.0%
Personal income (\$000)	Leelanau, Michigan [26089]	141,454	151,218	159,629	179,472
Population (persons)		14,391	14,645	14,524	14,752
Per capita personal income (dollars)		9,829	10,326	10,991	12,166
% of Michigan		88.6%	89.5%	89.2%	89.1%
% of U.S.		87.4%	86.5%	87.1%	87.6%
Personal income (\$000)	Manistee, Michigan [26101]	198,721	203,842	217,830	233,882
Population (persons)		23,020	22,521	22,287	22,061
Per capita personal income (dollars)		8,633	9,051	9,774	10,602
% of Michigan		77.8%	78.4%	79.3%	77.7%
% of U.S.		76.8%	75.8%	77.5%	76.3%
Personal income (\$000)	Missaukee, Michigan [26113]	75,400	80,597	86,470	99,138
Population (persons)		10,326	10,508	10,513	10,730
Per capita personal income (dollars)		7,302	7,670	8,225	9,239
% of Michigan		65.8%	66.5%	66.8%	67.7%
% of U.S.		64.9%	64.3%	65.2%	66.5%
Personal income (\$000)	Wexford, Michigan [26165]	199,534	211,015	225,485	253,557
Population (persons)		25,804	25,659	25,516	25,649
Per capita personal income (dollars)		7,733	8,224	8,837	9,886
% of Michigan		69.7%	71.3%	71.7%	72.4%
% of U.S.		68.8%	68.9%	70.0%	71.2%
Personal income (\$000)	Cadillac, MI MicroSA	274,934	291,612	311,955	352,695
Population (persons)	(counties of Missaukee and	36,130	36,167	36,029	36,379
Per capita personal income (dollars)	Wexford)	7,610	8,063	8,658	9,695
% of Michigan		68.6%	69.9%	70.3%	71.0%
% of U.S.		67.7%	67.6%	68.6%	69.8%
Personal income (\$000)	Traverse City, MI MicroSA	882,684	937,848	998,193	1,133,029
Population (persons)	(counties of Benzie, Grand	94,176	94,330	94,467	95,339
Per capita personal income (dollars)	Traverse, Kalkaska and	9,373	9,942	10,567	11,884
% of Michigan	Leelanau)	84.5%	86.2%	85.8%	87.1%
% of U.S.		83.3%	83.3%	83.7%	85.6%

Regional Economic Information System (Bureau of Economic Analysis)
Personal Income and Per Capita Income

Line Title	Area Name	1985	1986	1987	1988
Personal income (\$000)	Kalkaska, Michigan [26079]	112,400	123,047	132,335	141,159
Population (persons)		12,229	12,560	12,954	13,354
Per capita personal income (dollars)		9,191	9,797	10,216	10,571
% of Michigan		62.2%	62.8%	63.6%	62.1%
% of U.S.		62.3%	63.4%	62.9%	61.0%
Personal income (\$000)	Leelanau, Michigan [26089]	196,662	214,699	232,262	237,822
Population (persons)		15,115	15,291	15,668	15,993
Per capita personal income (dollars)		13,011	14,041	14,824	14,870
% of Michigan		88.1%	90.0%	92.3%	87.3%
% of U.S.		88.2%	90.9%	91.3%	85.8%
Personal income (\$000)	Manistee, Michigan [26101]	244,518	254,615	267,943	269,229
Population (persons)		21,890	21,780	21,564	21,547
Per capita personal income (dollars)		11,170	11,690	12,425	12,495
% of Michigan		75.6%	74.9%	77.4%	73.4%
% of U.S.		75.7%	75.7%	76.5%	72.1%
Personal income (\$000)	Missaukee, Michigan [26113]	109,945	119,077	124,331	136,885
Population (persons)		11,001	11,186	11,453	11,629
Per capita personal income (dollars)		9,994	10,645	10,856	11,771
% of Michigan		67.7%	68.2%	67.6%	69.1%
% of U.S.		67.7%	68.9%	66.8%	67.9%
Personal income (\$000)	Wexford, Michigan [26165]	273,033	289,196	302,998	333,834
Population (persons)		25,965	25,754	25,852	26,053
Per capita personal income (dollars)		10,515	11,229	11,720	12,814
% of Michigan		71.2%	71.9%	73.0%	75.3%
% of U.S.		71.2%	72.7%	72.2%	73.9%
Personal income (\$000)	Cadillac, MI MicroSA	382,978	408,273	427,329	470,719
Population (persons)	(counties of Missaukee and	36,966	36,940	37,305	37,682
Per capita personal income (dollars)	Wexford)	10,360	11,052	11,455	12,492
% of Michigan		70.1%	70.8%	71.4%	73.4%
% of U.S.		70.2%	71.6%	70.5%	72.1%
Personal income (\$000)	Traverse City, MI MicroSA	1,244,979	1,371,518	1,480,640	1,515,224
Population (persons)	(counties of Benzie, Grand	97,420	99,179	101,480	104,295
Per capita personal income (dollars)	Traverse, Kalkaska and	12,780	13,829	14,590	14,528
% of Michigan	Leelanau)	86.5%	88.6%	90.9%	85.3%
% of U.S.		86.6%	89.6%	89.8%	83.8%

Regional Economic Information System (Bureau of Economic Analysis)
Personal Income and Per Capita Income

Line Title	Area Name	1989	1990	1991	1992
Personal income (\$000)	Kalkaska, Michigan [26079]	152,195	168,343	186,480	202,680
Population (persons)		13,379	13,515	13,934	14,103
Per capita personal income (dollars)		11,376	12,456	13,383	14,371
% of Michigan		62.4%	65.8%	69.3%	70.7%
% of U.S.		61.4%	64.0%	67.3%	68.9%
Personal income (\$000)	Leelanau, Michigan [26089]	274,609	294,874	321,437	350,876
Population (persons)		16,399	16,554	16,851	17,458
Per capita personal income (dollars)		16,745	17,813	19,075	20,098
% of Michigan		91.9%	94.1%	98.7%	98.8%
% of U.S.		90.4%	91.5%	95.9%	96.4%
Personal income (\$000)	Manistee, Michigan [26101]	293,149	305,457	330,036	345,674
Population (persons)		21,430	21,245	21,504	22,031
Per capita personal income (dollars)		13,679	14,378	15,348	15,690
% of Michigan		75.1%	76.0%	79.4%	77.1%
% of U.S.		73.9%	73.8%	77.2%	75.2%
Personal income (\$000)	Missaukee, Michigan [26113]	148,413	153,264	156,142	169,599
Population (persons)		11,816	12,235	12,463	12,769
Per capita personal income (dollars)		12,560	12,527	12,528	13,282
% of Michigan		68.9%	66.2%	64.8%	65.3%
% of U.S.		67.8%	64.3%	63.0%	63.7%
Personal income (\$000)	Wexford, Michigan [26165]	358,402	365,432	382,935	414,051
Population (persons)		26,249	26,433	26,761	27,207
Per capita personal income (dollars)		13,654	13,825	14,309	15,219
% of Michigan		74.9%	73.1%	74.0%	74.8%
% of U.S.		73.7%	71.0%	71.9%	73.0%
Personal income (\$000)	Cadillac, MI MicroSA	506,815	518,696	539,077	583,650
Population (persons)	(counties of Missaukee and	38,065	38,668	39,224	39,976
Per capita personal income (dollars)	Wexford)	13,314	13,414	13,744	14,600
% of Michigan		73.1%	70.9%	71.1%	71.8%
% of U.S.		71.9%	68.9%	69.1%	70.0%
Personal income (\$000)	Traverse City, MI MicroSA	1,667,526	1,809,637	1,908,942	2,078,832
Population (persons)	(counties of Benzie, Grand	105,387	106,853	108,950	111,635
Per capita personal income (dollars)	Traverse, Kalkaska and	15,823	16,936	17,521	18,622
% of Michigan	Leelanau)	86.8%	89.5%	90.7%	91.6%
% of U.S.		85.4%	87.0%	88.1%	89.3%

Regional Economic Information System (Bureau of Economic Analysis)
Personal Income and Per Capita Income

Line Title	Area Name	1993	1994	1995	1996
Personal income (\$000)	Kalkaska, Michigan [26079]	224,414	236,848	247,891	263,531
Population (persons)		14,449	14,780	15,233	15,767
Per capita personal income (dollars)		15,531	16,025	16,273	16,714
% of Michigan		73.5%	70.6%	69.2%	68.8%
% of U.S.		72.8%	72.3%	70.5%	69.1%
Personal income (\$000)	Leelanau, Michigan [26089]	374,432	410,857	425,349	464,254
Population (persons)		18,039	18,472	18,893	19,216
Per capita personal income (dollars)		20,757	22,242	22,514	24,160
% of Michigan		98.2%	98.0%	95.8%	99.4%
% of U.S.		97.2%	100.3%	97.6%	99.9%
Personal income (\$000)	Manistee, Michigan [26101]	357,771	378,862	390,781	411,921
Population (persons)		22,715	22,804	23,094	23,269
Per capita personal income (dollars)		15,750	16,614	16,921	17,703
% of Michigan		74.5%	73.2%	72.0%	72.8%
% of U.S.		73.8%	74.9%	73.3%	73.2%
Personal income (\$000)	Missaukee, Michigan [26113]	184,901	199,973	208,518	221,498
Population (persons)		12,982	13,316	13,501	13,647
Per capita personal income (dollars)		14,243	15,017	15,445	16,231
% of Michigan		67.4%	66.2%	65.7%	66.8%
% of U.S.		66.7%	67.7%	66.9%	67.1%
Personal income (\$000)	Wexford, Michigan [26165]	440,466	481,788	507,968	532,519
Population (persons)		27,803	28,398	28,897	29,148
Per capita personal income (dollars)		15,842	16,966	17,579	18,269
% of Michigan		75.0%	74.8%	74.8%	75.2%
% of U.S.		74.2%	76.5%	76.2%	75.6%
Personal income (\$000)	Cadillac, MI MicroSA	625,367	681,761	716,486	754,017
Population (persons)	(counties of Missaukee and	40,785	41,714	42,398	42,795
Per capita personal income (dollars)	Wexford)	15,333	16,344	16,899	17,619
% of Michigan		72.6%	72.0%	71.9%	72.5%
% of U.S.		71.8%	73.7%	73.2%	72.9%
Personal income (\$000)	Traverse City, MI MicroSA	2,208,311	2,377,021	2,514,121	2,695,839
Population (persons)	(counties of Benzie, Grand	114,314	116,632	119,353	121,963
Per capita personal income (dollars)	Traverse, Kalkaska and	19,318	20,381	21,065	22,104
% of Michigan	Leelanau)	91.4%	89.8%	89.6%	90.9%
% of U.S.		90.5%	91.9%	91.3%	91.4%

Regional Economic Information System (Bureau of Economic Analysis)
Personal Income and Per Capita Income

Line Title	Area Name	1997	1998	1999	2000
Personal income (\$000)	Kalkaska, Michigan [26079]	282,024	286,814	296,402	305,102
Population (persons)		15,881	16,058	16,400	16,627
Per capita personal income (dollars)		17,759	17,861	18,073	18,350
% of Michigan		70.0%	66.4%	64.3%	62.1%
% of U.S.		70.1%	66.4%	64.7%	61.5%
Personal income (\$000)	Leelanau, Michigan [26089]	504,578	539,624	569,082	594,926
Population (persons)		19,787	20,270	20,636	21,266
Per capita personal income (dollars)		25,500	26,622	27,577	27,975
% of Michigan		100.5%	98.9%	98.2%	94.7%
% of U.S.		100.7%	99.0%	98.7%	93.7%
Personal income (\$000)	Manistee, Michigan [26101]	437,751	462,943	501,678	539,148
Population (persons)		23,611	23,874	24,133	24,636
Per capita personal income (dollars)		18,540	19,391	20,788	21,885
% of Michigan		73.1%	72.0%	74.0%	74.1%
% of U.S.		73.2%	72.1%	74.4%	73.3%
Personal income (\$000)	Missaukee, Michigan [26113]	231,274	245,976	275,195	280,875
Population (persons)		13,693	13,956	14,235	14,544
Per capita personal income (dollars)		16,890	17,625	19,332	19,312
% of Michigan		66.6%	65.5%	68.8%	65.3%
% of U.S.		66.7%	65.6%	69.2%	64.7%
Personal income (\$000)	Wexford, Michigan [26165]	561,905	586,571	637,629	677,109
Population (persons)		29,634	29,697	30,231	30,527
Per capita personal income (dollars)		18,961	19,752	21,092	22,181
% of Michigan		74.7%	73.4%	75.1%	75.1%
% of U.S.		74.8%	73.5%	75.5%	74.3%
Personal income (\$000)	Cadillac, MI MicroSA	793,179	832,547	912,824	957,984
Population (persons)	(counties of Missaukee and	43,327	43,653	44,466	45,071
Per capita personal income (dollars)	Wexford)	18,307	19,072	20,529	21,255
% of Michigan		72.2%	70.8%	73.1%	71.9%
% of U.S.		72.3%	70.9%	73.5%	71.2%
Personal income (\$000)	Traverse City, MI MicroSA	2,919,828	3,141,518	3,379,608	3,535,852
Population (persons)	(counties of Benzie, Grand	124,095	126,771	129,398	132,002
Per capita personal income (dollars)	Traverse, Kalkaska and	23,529	24,781	26,118	26,786
% of Michigan	Leelanau)	92.8%	92.1%	93.0%	90.6%
% of U.S.		92.9%	92.2%	93.5%	89.8%

Regional Economic Information System (Bureau of Economic Analysis)
Personal Income and Per Capita Income

Line Title	Area Name	2001	2002	2003	2004
Personal income (\$000)	Kalkaska, Michigan [26079]	311,310	316,093	327,697	339,881
Population (persons)		16,814	16,890	17,136	17,195
Per capita personal income (dollars)		18,515	18,715	19,123	19,766
% of Michigan		61.9%	61.9%	61.5%	62.6%
% of U.S.		60.6%	60.7%	60.7%	59.7%
Personal income (\$000)	Leelanau, Michigan [26089]	619,349	647,673	685,719	766,168
Population (persons)		21,513	21,558	21,838	21,916
Per capita personal income (dollars)		28,790	30,043	31,400	34,959
% of Michigan		96.2%	99.4%	100.9%	110.8%
% of U.S.		94.2%	97.5%	99.7%	105.5%
Personal income (\$000)	Manistee, Michigan [26101]	558,269	561,903	581,242	592,755
Population (persons)		24,716	24,889	25,094	24,871
Per capita personal income (dollars)		22,587	22,576	23,163	23,833
% of Michigan		75.5%	74.7%	74.4%	75.5%
% of U.S.		73.9%	73.2%	73.5%	72.0%
Personal income (\$000)	Missaukee, Michigan [26113]	289,074	285,092	292,549	323,708
Population (persons)		14,595	14,839	15,014	15,105
Per capita personal income (dollars)		19,806	19,212	19,485	21,431
% of Michigan		66.2%	63.6%	62.6%	67.9%
% of U.S.		64.8%	62.3%	61.8%	64.7%
Personal income (\$000)	Wexford, Michigan [26165]	667,940	692,584	709,886	749,990
Population (persons)		30,694	30,760	31,097	31,256
Per capita personal income (dollars)		21,761	22,516	22,828	23,995
% of Michigan		72.7%	74.5%	73.4%	76.1%
% of U.S.		71.2%	73.1%	72.5%	72.4%
Personal income (\$000)	Cadillac, MI MicroSA	957,014	977,676	1,002,435	1,073,698
Population (persons)	(counties of Missaukee and	45,289	45,599	46,111	46,361
Per capita personal income (dollars)	Wexford)	21,131	21,441	21,740	23,160
% of Michigan		70.6%	71.0%	69.9%	73.4%
% of U.S.		69.1%	69.6%	69.0%	69.9%
Personal income (\$000)	Traverse City, MI MicroSA	3,680,571	3,752,901	3,901,807	4,157,050
Population (persons)	(counties of Benzie, Grand	134,710	136,165	137,871	139,006
Per capita personal income (dollars)	Traverse, Kalkaska and	27,322	27,561	28,300	29,906
% of Michigan	Leelanau)	91.3%	91.2%	90.9%	94.8%
% of U.S.		89.4%	89.4%	89.8%	90.3%

Regional Economic Information System (Bureau of Economic Analysis)
Personal Income and Per Capita Income

Line Title	Area Name	2005	2006	2007
Personal income (\$000)	Kalkaska, Michigan [26079]	351,206	367,364	387,300
Population (persons)		17,111	17,210	17,114
Per capita personal income (dollars)		20,525	21,346	22,631
% of Michigan		63.7%	64.7%	65.7%
% of U.S.		59.2%	58.0%	58.6%
Personal income (\$000)	Leelanau, Michigan [26089]	794,165	806,367	861,055
Population (persons)		21,848	21,829	21,829
Per capita personal income (dollars)		36,350	36,940	39,445
% of Michigan		112.8%	112.0%	114.6%
% of U.S.		104.8%	100.4%	102.1%
Personal income (\$000)	Manistee, Michigan [26101]	609,163	618,271	648,151
Population (persons)		24,965	24,927	24,748
Per capita personal income (dollars)		24,401	24,803	26,190
% of Michigan		75.7%	75.2%	76.1%
% of U.S.		70.3%	67.4%	67.8%
Personal income (\$000)	Missaukee, Michigan [26113]	325,285	327,994	340,490
Population (persons)		15,064	14,996	14,980
Per capita personal income (dollars)		21,594	21,872	22,730
% of Michigan		67.0%	66.3%	66.0%
% of U.S.		62.2%	59.4%	58.9%
Personal income (\$000)	Wexford, Michigan [26165]	766,423	791,127	813,013
Population (persons)		31,576	31,674	31,739
Per capita personal income (dollars)		24,272	24,977	25,616
% of Michigan		75.3%	75.7%	74.4%
% of U.S.		70.0%	67.9%	66.3%
Personal income (\$000)	Cadillac, MI MicroSA	1,091,708	1,119,121	1,153,503
Population (persons)	(counties of Missaukee and	46,640	46,670	46,719
Per capita personal income (dollars)	Wexford)	23,407	23,979	24,690
% of Michigan		72.6%	72.7%	71.7%
% of U.S.		67.5%	65.2%	63.9%
Personal income (\$000)	Traverse City, MI MicroSA	4,298,229	4,515,659	4,774,115
Population (persons)	(counties of Benzie, Grand	139,907	141,048	141,825
Per capita personal income (dollars)	Traverse, Kalkaska and	30,722	32,015	33,662
% of Michigan	Leelanau)	95.3%	97.1%	97.8%
% of U.S.		88.6%	87.0%	87.2%

Regional Economic Information System (Bureau of Economic Analysis)
Personal Income and Per Capita Income

Line Title	Area Name	1969	1970	1971	1972
Personal income (\$000)	Northern Lakes Economic Alliance	150,285	161,031	178,771	203,620
Population (persons)		45,846	47,921	49,743	50,350
Per capita personal income (dollars)		\$3,278	\$3,360	\$3,594	\$4,044
% of Michigan		78.8%	80.0%	79.9%	81.4%
% of U.S.		85.5%	82.3%	82.8%	85.7%
Personal income (\$000)	Northwest Lower Michigan	505,433	547,131	602,607	677,456
Population		155,734	159,856	165,102	169,177
Per capita personal income		\$3,245	\$3,423	\$3,650	\$4,004
% of Michigan		78.0%	81.5%	81.1%	80.6%
% of U.S.		84.6%	83.8%	84.1%	84.9%

Regional Economic Information System (Bureau of Economic Analysis)
Personal Income and Per Capita Income

Line Title	Area Name	1973	1974	1975	1976
Personal income (\$000)	Northern Lakes Economic Alliance	230,632	258,712	284,876	321,429
Population (persons)		52,506	54,051	55,523	56,501
Per capita personal income (dollars)		\$4,392	\$4,786	\$5,131	\$5,689
% of Michigan		79.1%	80.8%	81.4%	80.2%
% of U.S.		84.0%	83.9%	83.1%	84.2%
Personal income (\$000)	Northwest Lower Michigan	767,649	867,016	971,563	1,093,965
Population		176,379	181,147	185,642	192,373
Per capita personal income		\$4,352	\$4,786	\$5,234	\$5,687
% of Michigan		78.4%	80.8%	83.0%	80.2%
% of U.S.		83.2%	83.9%	84.8%	84.2%

Regional Economic Information System (Bureau of Economic Analysis)
Personal Income and Per Capita Income

Line Title	Area Name	1977	1978	1979	1980
Personal income (\$000)	Northern Lakes Economic Alliance	365,457	413,409	463,647	509,806
Population (persons)		57,304	57,937	59,087	59,364
Per capita personal income (dollars)		\$6,378	\$7,135	\$7,847	\$8,588
% of Michigan		80.2%	81.1%	81.4%	83.3%
% of U.S.		86.1%	86.5%	85.8%	84.9%
Personal income (\$000)	Northwest Lower Michigan	1,250,023	1,418,370	1,579,072	1,734,749
Population		195,952	199,722	206,512	209,446
Per capita personal income		\$6,379	\$7,102	\$7,646	\$8,283
% of Michigan		80.2%	80.7%	79.4%	80.3%
% of U.S.		86.1%	86.1%	83.6%	81.9%

Regional Economic Information System (Bureau of Economic Analysis)
Personal Income and Per Capita Income

Line Title	Area Name	1981	1982	1983	1984
Personal income (\$000)	Northern Lakes Economic Alliance	550,051	577,853	609,456	668,688
Population (persons)		60,318	59,960	59,922	60,204
Per capita personal income (dollars)		\$9,119	\$9,637	\$10,171	\$11,107
% of Michigan		82.2%	83.5%	82.6%	81.4%
% of U.S.		81.1%	80.7%	80.6%	80.0%
Personal income (\$000)	Northwest Lower Michigan	1,906,390	2,011,155	2,137,434	2,388,294
Population		213,644	212,978	212,705	213,983
Per capita personal income		\$8,923	\$9,443	\$10,049	\$11,161
% of Michigan		80.4%	81.8%	81.6%	81.8%
% of U.S.		79.3%	79.1%	79.6%	80.3%

Regional Economic Information System (Bureau of Economic Analysis)
Personal Income and Per Capita Income

Line Title	Area Name	1985	1986	1987	1988
Personal income (\$000)	Northern Lakes Economic Alliance	724,953	776,010	826,630	893,179
Population (persons)		60,422	60,810	61,540	63,048
Per capita personal income (dollars)		\$11,998	\$12,761	\$13,432	\$14,167
% of Michigan		81.2%	81.8%	83.7%	83.2%
% of U.S.		81.3%	82.6%	82.7%	81.7%
Personal income (\$000)	Northwest Lower Michigan	2,597,428	2,810,416	3,002,542	3,148,351
Population		216,698	218,709	221,889	226,572
Per capita personal income		\$11,986	\$12,850	\$13,532	\$13,896
% of Michigan		81.1%	82.3%	84.3%	81.6%
% of U.S.		81.2%	83.2%	83.3%	80.2%

Regional Economic Information System (Bureau of Economic Analysis)
Personal Income and Per Capita Income

Line Title	Area Name	1989	1990	1991	1992
Personal income (\$000)	Northern Lakes Economic Alliance	1,006,061	1,090,023	1,146,273	1,219,059
Population (persons)		63,760	65,050	66,580	67,908
Per capita personal income (dollars)		\$15,779	\$16,757	\$17,216	\$17,952
% of Michigan		86.6%	88.6%	89.1%	88.3%
% of U.S.		85.2%	86.0%	86.5%	86.1%
Personal income (\$000)	Northwest Lower Michigan	3,473,551	3,723,813	3,924,328	4,227,215
Population		228,642	231,816	236,258	241,550
Per capita personal income		\$15,192	\$16,064	\$16,610	\$17,500
% of Michigan		83.4%	84.9%	86.0%	86.0%
% of U.S.		82.0%	82.5%	83.5%	83.9%

Regional Economic Information System (Bureau of Economic Analysis)
Personal Income and Per Capita Income

Line Title	Area Name	1993	1994	1995	1996
Personal income (\$000)	Northern Lakes Economic Alliance	1,294,867	1,411,276	1,529,064	1,639,792
Population (persons)		69,493	71,087	72,838	74,401
Per capita personal income (dollars)		\$18,633	\$19,853	\$20,993	\$22,040
% of Michigan		88.2%	87.5%	89.3%	90.7%
% of U.S.		87.3%	89.5%	91.0%	91.2%
Personal income (\$000)	Northwest Lower Michigan	4,486,316	4,848,920	5,150,452	5,501,569
Population		247,307	252,237	257,683	262,428
Per capita personal income		\$18,141	\$19,224	\$19,988	\$20,964
% of Michigan		85.9%	84.7%	85.0%	86.3%
% of U.S.		85.0%	86.7%	86.6%	86.7%

Regional Economic Information System (Bureau of Economic Analysis)
Personal Income and Per Capita Income

Line Title	Area Name	1997	1998	1999	2000
Personal income (\$000)	Northern Lakes Economic Alliance	1,758,350	1,870,948	2,006,409	2,116,548
Population (persons)		76,052	77,640	79,329	80,984
Per capita personal income (dollars)		\$23,120	\$24,098	\$25,292	\$26,135
% of Michigan		91.1%	89.5%	90.0%	88.4%
% of U.S.		91.3%	89.6%	90.5%	87.6%
Personal income (\$000)	Northwest Lower Michigan	5,909,108	6,307,956	6,800,519	7,149,532
Population		267,085	271,938	277,326	282,693
Per capita personal income		\$22,124	\$23,196	\$24,522	\$25,291
% of Michigan		87.2%	86.2%	87.3%	85.6%
% of U.S.		87.3%	86.3%	87.8%	84.7%

Regional Economic Information System (Bureau of Economic Analysis)
Personal Income and Per Capita Income

Line Title	Area Name	2001	2002	2003	2004
Personal income (\$000)	Northern Lakes Economic Alliance	2,281,791	2,348,768	2,392,311	2,563,637
Population (persons)		82,023	82,751	83,372	83,946
Per capita personal income (dollars)		\$27,819	\$28,384	\$28,694	\$30,539
% of Michigan		92.9%	93.9%	92.2%	96.8%
% of U.S.		91.0%	92.1%	91.1%	92.2%
Personal income (\$000)	Northwest Lower Michigan	7,477,645	7,641,248	7,877,795	8,387,140
Population		286,738	289,404	292,448	294,184
Per capita personal income		\$26,078	\$26,403	\$26,937	\$28,510
% of Michigan		87.1%	87.4%	86.6%	90.4%
% of U.S.		85.3%	85.7%	85.5%	86.1%

Regional Economic Information System (Bureau of Economic Analysis)
Personal Income and Per Capita Income

Line Title	Area Name	2005	2006	2007
Personal income (\$000)	Northern Lakes Economic Alliance	2,623,153	2,672,418	2,827,474
Population (persons)		83,877	83,817	83,753
Per capita personal income (dollars)		\$31,274	\$31,884	\$33,760
% of Michigan		97.0%	96.7%	98.1%
% of U.S.		90.2%	86.7%	87.4%
Personal income (\$000)	Northwest Lower Michigan	8,622,253	8,925,469	9,403,243
Population		295,389	296,462	297,045
Per capita personal income		\$29,189	\$30,107	\$31,656
% of Michigan		90.6%	91.3%	92.0%
% of U.S.		84.1%	81.8%	82.0%