

Compensation by NAICS Industry 2001-2008 (Table CA06)

Source: Bureau of Economic Analysis

<http://www.bea.gov/regional/index.htm>

	2001	2002	2003	2004	2005	2006	2007	2008	Percent Change 2001-2008
Antrim, Michigan [26009]									
Compensation of employees, received (\$000)	191,205	199,119	206,031	213,812	213,300	212,079	221,368	216,361	13.2%
Total wage and salary disbursements	156,289	160,875	160,927	169,068	167,948	169,272	176,265	171,650	9.8%
Total supplements to wages and salaries	34,916	38,244	45,104	44,744	45,352	42,807	45,103	44,711	28.1%
Employer contrib. for employee pension & insur. funds	22,365	25,432	32,216	31,016	30,723	27,886	29,755	29,675	32.7%
Employer contributions for government social insurance	12,551	12,812	12,888	13,728	14,629	14,921	15,348	15,036	19.8%
Total average compensation per job (dollars)	28,611	29,508	31,359	31,457	31,960	32,562	34,109	35,078	22.6%
Farm compensation	4,826	5,590	4,382	4,707	4,131	4,046	4,990	4,437	-8.1%
Nonfarm compensation	186,379	193,529	201,649	209,105	209,169	208,033	216,378	211,924	13.7%
Private compensation	137,359	143,396	149,214	153,600	151,071	149,515	156,209	151,732	10.5%
Forestry, fishing, related activities, and other 2/	322	291	(D)	(D)	623	705	702	(D)	--
Mining	146	99	(D)	(D)	265	168	226	(D)	--
Utilities	0	0	0	0	0	0	0	0	--
Construction	12,421	12,716	13,369	14,642	16,569	15,357	13,670	11,548	-7.0%
Manufacturing	51,464	51,702	61,219	58,947	53,868	52,793	57,295	55,645	8.1%
Durable goods manufacturing	46,396	47,549	56,827	53,465	47,048	45,396	49,506	47,654	2.7%
Nondurable goods manufacturing	5,068	4,153	4,392	5,482	6,820	7,397	7,789	7,991	57.7%
Wholesale trade	10,415	11,568	5,875	5,255	5,148	5,204	4,227	3,491	-66.5%
Retail trade	14,261	15,167	15,763	16,445	16,473	17,085	18,142	17,253	21.0%
Transportation and warehousing	2,055	(D)	(D)	965	1,060	2,116	2,817	2,977	44.9%
Information	2,177	3,415	3,481	3,386	1,877	2,035	1,919	1,512	-30.5%
Finance and insurance	5,470	6,197	6,784	7,592	8,320	6,921	6,551	6,318	15.5%
Real estate and rental and leasing	1,717	1,824	1,858	2,425	2,037	2,380	2,454	2,020	17.6%
Professional and technical services	4,292	4,307	5,536	5,923	6,020	5,148	6,900	7,076	64.9%
Management of companies and enterprises	0	0	0	0	0	0	0	0	--
Administrative and waste services	5,256	2,204	2,483	1,727	2,118	2,726	2,003	2,281	-56.6%
Educational services	(D)	(D)	431	535	554	(D)	(D)	(D)	--
Health care and social assistance	(D)	(D)	3,191	4,101	4,805	(D)	(D)	(D)	--
Arts, entertainment, and recreation	1,480	1,749	1,422	(D)	2,210	2,467	2,720	3,100	109.5%
Accommodation and food services	17,250	21,293	19,221	21,162	20,397	19,889	21,135	21,468	24.5%
Other services, except public administration	6,111	6,902	7,896	7,973	8,727	8,420	8,802	9,035	47.8%
Government and government enterprises	49,020	50,133	52,435	55,505	58,098	58,518	60,169	60,192	22.8%
Federal, civilian	2,952	2,949	3,275	4,129	4,207	4,857	5,217	5,131	73.8%
Military	737	999	1,423	1,555	1,720	1,606	1,673	1,840	149.7%
State and local	45,331	46,185	47,737	49,821	52,171	52,055	53,279	53,221	17.4%
State government	3,658	3,667	3,428	3,445	3,885	4,239	4,147	4,293	17.4%
Local government	41,673	42,518	44,309	46,376	48,286	47,816	49,132	48,928	17.4%

Compensation by NAICS Industry 2001-2008 (Table CA06)

Source: Bureau of Economic Analysis

Footnotes: <http://www.bea.gov/regional/docs/footnotes.cfm?tablename=CA06N>

	Percent of Total Compensation							
	2001	2002	2003	2004	2005	2006	2007	2008
Antrim, Michigan [26009]								
Compensation of employees, received (\$000)	100.0%	100.0%	100.0%	100.0%	100.0%	100.0%	100.0%	100.0%
Total wage and salary disbursements	81.7%	80.8%	78.1%	79.1%	78.7%	79.8%	79.6%	79.3%
Total supplements to wages and salaries	18.3%	19.2%	21.9%	20.9%	21.3%	20.2%	20.4%	20.7%
Employer contrib. for employee pension & insur. funds	11.7%	12.8%	15.6%	14.5%	14.4%	13.1%	13.4%	13.7%
Employer contributions for government social insurance	6.6%	6.4%	6.3%	6.4%	6.9%	7.0%	6.9%	6.9%
Total average compensation per job (dollars)								
Farm compensation	2.5%	2.8%	2.1%	2.2%	1.9%	1.9%	2.3%	2.1%
Nonfarm compensation	97.5%	97.2%	97.9%	97.8%	98.1%	98.1%	97.7%	97.9%
Private compensation	71.8%	72.0%	72.4%	71.8%	70.8%	70.5%	70.6%	70.1%
Forestry, fishing, related activities, and other 2/	0.2%	0.1%	--	--	0.3%	0.3%	0.3%	--
Mining	0.1%	0.0%	--	--	0.1%	0.1%	0.1%	--
Utilities	--	--	--	--	--	--	--	--
Construction	6.5%	6.4%	6.5%	6.8%	7.8%	7.2%	6.2%	5.3%
Manufacturing	26.9%	26.0%	29.7%	27.6%	25.3%	24.9%	25.9%	25.7%
Durable goods manufacturing	24.3%	23.9%	27.6%	25.0%	22.1%	21.4%	22.4%	22.0%
Nondurable goods manufacturing	2.7%	2.1%	2.1%	2.6%	3.2%	3.5%	3.5%	3.7%
Wholesale trade	5.4%	5.8%	2.9%	2.5%	2.4%	2.5%	1.9%	1.6%
Retail trade	7.5%	7.6%	7.7%	7.7%	7.7%	8.1%	8.2%	8.0%
Transportation and warehousing	1.1%	--	--	0.5%	0.5%	1.0%	1.3%	1.4%
Information	1.1%	1.7%	1.7%	1.6%	0.9%	1.0%	0.9%	0.7%
Finance and insurance	2.9%	3.1%	3.3%	3.6%	3.9%	3.3%	3.0%	2.9%
Real estate and rental and leasing	0.9%	0.9%	0.9%	1.1%	1.0%	1.1%	1.1%	0.9%
Professional and technical services	2.2%	2.2%	2.7%	2.8%	2.8%	2.4%	3.1%	3.3%
Management of companies and enterprises	--	--	--	--	--	--	--	--
Administrative and waste services	2.7%	1.1%	1.2%	0.8%	1.0%	1.3%	0.9%	1.1%
Educational services	--	--	0.2%	0.3%	0.3%	--	--	--
Health care and social assistance	--	--	1.5%	1.9%	2.3%	--	--	--
Arts, entertainment, and recreation	0.8%	0.9%	0.7%	--	1.0%	1.2%	1.2%	1.4%
Accommodation and food services	9.0%	10.7%	9.3%	9.9%	9.6%	9.4%	9.5%	9.9%
Other services, except public administration	3.2%	3.5%	3.8%	3.7%	4.1%	4.0%	4.0%	4.2%
Government and government enterprises	25.6%	25.2%	25.5%	26.0%	27.2%	27.6%	27.2%	27.8%
Federal, civilian	1.5%	1.5%	1.6%	1.9%	2.0%	2.3%	2.4%	2.4%
Military	0.4%	0.5%	0.7%	0.7%	0.8%	0.8%	0.8%	0.9%
State and local	23.7%	23.2%	23.2%	23.3%	24.5%	24.5%	24.1%	24.6%
State government	1.9%	1.8%	1.7%	1.6%	1.8%	2.0%	1.9%	2.0%
Local government	21.8%	21.4%	21.5%	21.7%	22.6%	22.5%	22.2%	22.6%

Compensation by NAICS Industry 2001-2008 (Table CA06)

Source: Bureau of Economic Analysis

<http://www.bea.gov/regional/index.htm>

	2001	2002	2003	2004	2005	2006	2007	2008	Percent Change 2001-2008
Benzie, Michigan [26019]									
Compensation of employees, received (\$000)	129,466	141,673	134,199	145,629	146,626	148,958	150,863	148,639	14.8%
Total wage and salary disbursements	107,190	116,138	108,423	116,993	116,948	119,933	121,514	119,431	11.4%
Total supplements to wages and salaries	22,276	25,535	25,776	28,636	29,678	29,025	29,349	29,208	31.1%
Employer contrib. for employee pension & insur. funds	13,784	16,252	16,952	19,000	19,300	18,342	18,653	18,655	35.3%
Employer contributions for government social insurance	8,492	9,283	8,824	9,636	10,378	10,683	10,696	10,553	24.3%
Total average compensation per job (dollars)	28,053	29,914	29,167	30,283	30,901	31,039	32,690	33,990	21.2%
Farm compensation	959	902	903	1,185	1,229	1,390	1,955	1,734	80.8%
Nonfarm compensation	128,507	140,771	133,296	144,444	145,397	147,568	148,908	146,905	14.3%
Private compensation	99,341	109,685	101,955	110,954	112,106	113,318	114,072	111,647	12.4%
Forestry, fishing, related activities, and other 2/	(D)	(D)	(D)	158	209	231	256	241	--
Mining	(D)	(D)	(D)	0	0	0	0	0	--
Utilities	(D)	(D)	(D)	(D)	(D)	(D)	(D)	(D)	--
Construction	12,564	14,024	15,538	17,612	16,659	14,973	15,172	13,687	8.9%
Manufacturing	14,904	15,336	16,617	19,414	20,402	21,673	20,937	20,204	35.6%
Durable goods manufacturing	(D)	6,525	6,758	8,720	9,473	9,430	7,908	7,004	--
Nondurable goods manufacturing	(D)	8,811	9,859	10,694	10,929	12,243	13,029	13,200	--
Wholesale trade	1,564	1,390	1,489	1,742	1,838	1,855	1,948	2,018	29.0%
Retail trade	12,548	13,390	14,040	15,292	15,432	14,860	15,492	14,762	17.6%
Transportation and warehousing	(D)	(D)	(D)	(D)	(D)	(D)	(D)	(D)	--
Information	1,536	925	460	511	606	536	519	669	-56.4%
Finance and insurance	6,377	7,444	8,903	9,824	8,436	8,043	8,506	8,052	26.3%
Real estate and rental and leasing	1,015	1,058	1,258	1,354	1,360	1,174	1,199	1,664	63.9%
Professional and technical services	4,888	5,622	2,702	3,106	2,939	2,906	2,677	2,264	-53.7%
Management of companies and enterprises	0	0	0	0	0	0	0	0	--
Administrative and waste services	569	645	1,158	1,344	1,262	1,523	1,476	1,454	155.5%
Educational services	(D)	(D)	(D)	(D)	(D)	99	96	(D)	--
Health care and social assistance	(D)	(D)	(D)	(D)	(D)	12,454	12,714	(D)	--
Arts, entertainment, and recreation	1,985	2,140	2,174	2,320	2,728	2,884	2,883	2,524	27.2%
Accommodation and food services	17,150	20,070	18,202	18,234	18,914	19,713	19,679	19,890	16.0%
Other services, except public administration	5,617	6,471	6,886	7,125	7,470	8,012	7,908	8,067	43.6%
Government and government enterprises	29,166	31,086	31,341	33,490	33,291	34,250	34,836	35,258	20.9%
Federal, civilian	1,932	2,054	2,063	2,344	2,483	2,637	2,702	2,692	39.3%
Military	1,000	1,142	1,572	1,932	2,167	2,037	2,185	2,389	138.9%
State and local	26,234	27,890	27,706	29,214	28,641	29,576	29,949	30,177	15.0%
State government	1,558	1,562	1,455	1,458	1,644	1,796	1,755	1,817	16.6%
Local government	24,676	26,328	26,251	27,756	26,997	27,780	28,194	28,360	14.9%

Compensation by NAICS Industry 2001-2008 (Table CA06)

Source: Bureau of Economic Analysis

Footnotes: <http://www.bea.gov/regional/docs/footnotes.cfm?tablename=CA06N>

	Percent of Total Compensation							
	2001	2002	2003	2004	2005	2006	2007	2008
Benzie, Michigan [26019]								
Compensation of employees, received (\$000)	100.0%	100.0%	100.0%	100.0%	100.0%	100.0%	100.0%	100.0%
Total wage and salary disbursements	82.8%	82.0%	80.8%	80.3%	79.8%	80.5%	80.5%	80.3%
Total supplements to wages and salaries	17.2%	18.0%	19.2%	19.7%	20.2%	19.5%	19.5%	19.7%
Employer contrib. for employee pension & insur. funds	10.6%	11.5%	12.6%	13.0%	13.2%	12.3%	12.4%	12.6%
Employer contributions for government social insurance	6.6%	6.6%	6.6%	6.6%	7.1%	7.2%	7.1%	7.1%
Total average compensation per job (dollars)								
Farm compensation	0.7%	0.6%	0.7%	0.8%	0.8%	0.9%	1.3%	1.2%
Nonfarm compensation	99.3%	99.4%	99.3%	99.2%	99.2%	99.1%	98.7%	98.8%
Private compensation	76.7%	77.4%	76.0%	76.2%	76.5%	76.1%	75.6%	75.1%
Forestry, fishing, related activities, and other 2/	--	--	--	0.1%	0.1%	0.2%	0.2%	0.2%
Mining	--	--	--	--	--	--	--	--
Utilities	--	--	--	--	--	--	--	--
Construction	9.7%	9.9%	11.6%	12.1%	11.4%	10.1%	10.1%	9.2%
Manufacturing	11.5%	10.8%	12.4%	13.3%	13.9%	14.5%	13.9%	13.6%
Durable goods manufacturing	--	4.6%	5.0%	6.0%	6.5%	6.3%	5.2%	4.7%
Nondurable goods manufacturing	--	6.2%	7.3%	7.3%	7.5%	8.2%	8.6%	8.9%
Wholesale trade	1.2%	1.0%	1.1%	1.2%	1.3%	1.2%	1.3%	1.4%
Retail trade	9.7%	9.5%	10.5%	10.5%	10.5%	10.0%	10.3%	9.9%
Transportation and warehousing	--	--	--	--	--	--	--	--
Information	1.2%	0.7%	0.3%	0.4%	0.4%	0.4%	0.3%	0.5%
Finance and insurance	4.9%	5.3%	6.6%	6.7%	5.8%	5.4%	5.6%	5.4%
Real estate and rental and leasing	0.8%	0.7%	0.9%	0.9%	0.9%	0.8%	0.8%	1.1%
Professional and technical services	3.8%	4.0%	2.0%	2.1%	2.0%	2.0%	1.8%	1.5%
Management of companies and enterprises	--	--	--	--	--	--	--	--
Administrative and waste services	0.4%	0.5%	0.9%	0.9%	0.9%	1.0%	1.0%	1.0%
Educational services	--	--	--	--	--	0.1%	0.1%	--
Health care and social assistance	--	--	--	--	--	8.4%	8.4%	--
Arts, entertainment, and recreation	1.5%	1.5%	1.6%	1.6%	1.9%	1.9%	1.9%	1.7%
Accommodation and food services	13.2%	14.2%	13.6%	12.5%	12.9%	13.2%	13.0%	13.4%
Other services, except public administration	4.3%	4.6%	5.1%	4.9%	5.1%	5.4%	5.2%	5.4%
Government and government enterprises	22.5%	21.9%	23.4%	23.0%	22.7%	23.0%	23.1%	23.7%
Federal, civilian	1.5%	1.4%	1.5%	1.6%	1.7%	1.8%	1.8%	1.8%
Military	0.8%	0.8%	1.2%	1.3%	1.5%	1.4%	1.4%	1.6%
State and local	20.3%	19.7%	20.6%	20.1%	19.5%	19.9%	19.9%	20.3%
State government	1.2%	1.1%	1.1%	1.0%	1.1%	1.2%	1.2%	1.2%
Local government	19.1%	18.6%	19.6%	19.1%	18.4%	18.6%	18.7%	19.1%

Compensation by NAICS Industry 2001-2008 (Table CA06)

Source: Bureau of Economic Analysis

<http://www.bea.gov/regional/index.htm>

	2001	2002	2003	2004	2005	2006	2007	2008	Percent Change 2001-2008
Charlevoix, Michigan [26029]									
Compensation of employees, received (\$000)	405,106	424,644	427,888	464,893	463,724	463,034	455,589	462,852	14.3%
Total wage and salary disbursements	333,680	345,246	344,258	370,439	367,921	370,910	365,739	370,976	11.2%
Total supplements to wages and salaries	71,426	79,398	83,630	94,454	95,803	92,124	89,850	91,876	28.6%
Employer contrib. for employee pension & insur. funds	44,093	51,851	55,968	63,997	64,705	60,595	58,879	60,114	36.3%
Employer contributions for government social insurance	27,333	27,547	27,662	30,457	31,098	31,529	30,971	31,762	16.2%
Total average compensation per job (dollars)	35,498	37,666	38,758	41,061	41,041	41,658	41,990	43,872	23.6%
Farm compensation	462	487	494	646	679	775	1,090	975	111.0%
Nonfarm compensation	404,644	424,157	427,394	464,247	463,045	462,259	454,499	461,877	14.1%
Private compensation	328,600	344,412	344,400	375,699	371,520	369,362	364,427	370,766	12.8%
Forestry, fishing, related activities, and other 2/	(D)	(D)	(D)	95	101	(D)	(D)	(D)	--
Mining	(D)	(D)	(D)	0	0	(D)	(D)	(D)	--
Utilities	18,395	20,267	20,346	20,150	19,567	16,335	12,590	12,307	-33.1%
Construction	37,476	36,393	32,422	33,808	32,935	31,816	29,584	25,573	-31.8%
Manufacturing	137,689	145,083	147,002	164,256	157,331	156,465	154,345	156,057	13.3%
Durable goods manufacturing	107,325	110,264	109,679	119,805	109,123	103,567	99,763	103,532	-3.5%
Nondurable goods manufacturing	30,364	34,819	37,323	44,451	48,208	52,898	54,582	52,525	73.0%
Wholesale trade	1,914	1,961	2,097	1,838	2,770	2,281	2,754	2,784	45.5%
Retail trade	25,348	25,762	25,973	26,470	25,254	25,167	26,654	27,103	6.9%
Transportation and warehousing	3,274	3,390	3,318	4,206	4,195	4,471	4,635	4,344	32.7%
Information	1,331	1,566	1,592	2,026	1,879	2,061	2,209	2,147	61.3%
Finance and insurance	6,629	7,896	9,045	11,441	11,603	10,859	11,137	10,617	60.2%
Real estate and rental and leasing	3,300	3,302	3,274	3,788	3,831	3,557	3,325	3,149	-4.6%
Professional and technical services	7,832	10,185	10,970	11,616	9,341	8,526	6,585	(D)	--
Management of companies and enterprises	(D)	(D)	0	0	0	0	0	(D)	--
Administrative and waste services	(D)	(D)	(D)	(D)	9,487	8,685	9,389	10,807	--
Educational services	510	474	757	(D)	1,628	2,306	2,599	2,258	342.7%
Health care and social assistance	29,275	31,586	32,589	(D)	34,364	36,888	38,450	43,726	49.4%
Arts, entertainment, and recreation	5,999	6,994	5,020	4,924	7,703	8,429	8,251	7,817	30.3%
Accommodation and food services	29,086	27,944	29,513	32,102	38,075	40,055	39,690	40,996	40.9%
Other services, except public administration	12,436	13,793	13,111	12,920	11,456	10,955	11,570	11,955	-3.9%
Government and government enterprises	76,044	79,745	82,994	88,548	91,525	92,897	90,072	91,111	19.8%
Federal, civilian	3,461	3,324	3,346	3,651	3,792	4,201	4,265	3,857	11.4%
Military	3,862	4,704	5,687	6,068	6,000	4,459	2,924	3,163	-18.1%
State and local	68,721	71,717	73,961	78,829	81,733	84,237	82,883	84,091	22.4%
State government	4,676	4,684	4,370	4,393	4,960	5,412	5,295	5,481	17.2%
Local government	64,045	67,033	69,591	74,436	76,773	78,825	77,588	78,610	22.7%

Compensation by NAICS Industry 2001-2008 (Table CA06)

Source: Bureau of Economic Analysis

Footnotes: <http://www.bea.gov/regional/docs/footnotes.cfm?tablename=CA06N>

	Percent of Total Compensation							
	2001	2002	2003	2004	2005	2006	2007	2008
Charlevoix, Michigan [26029]								
Compensation of employees, received (\$000)	100.0%	100.0%	100.0%	100.0%	100.0%	100.0%	100.0%	100.0%
Total wage and salary disbursements	82.4%	81.3%	80.5%	79.7%	79.3%	80.1%	80.3%	80.2%
Total supplements to wages and salaries	17.6%	18.7%	19.5%	20.3%	20.7%	19.9%	19.7%	19.8%
Employer contrib. for employee pension & insur. funds	10.9%	12.2%	13.1%	13.8%	14.0%	13.1%	12.9%	13.0%
Employer contributions for government social insurance	6.7%	6.5%	6.5%	6.6%	6.7%	6.8%	6.8%	6.9%
Total average compensation per job (dollars)								
Farm compensation	0.1%	0.1%	0.1%	0.1%	0.1%	0.2%	0.2%	0.2%
Nonfarm compensation	99.9%	99.9%	99.9%	99.9%	99.9%	99.8%	99.8%	99.8%
Private compensation	81.1%	81.1%	80.5%	80.8%	80.1%	79.8%	80.0%	80.1%
Forestry, fishing, related activities, and other 2/	--	--	--	0.0%	0.0%	--	--	--
Mining	--	--	--	--	--	--	--	--
Utilities	4.5%	4.8%	4.8%	4.3%	4.2%	3.5%	2.8%	2.7%
Construction	9.3%	8.6%	7.6%	7.3%	7.1%	6.9%	6.5%	5.5%
Manufacturing	34.0%	34.2%	34.4%	35.3%	33.9%	33.8%	33.9%	33.7%
Durable goods manufacturing	26.5%	26.0%	25.6%	25.8%	23.5%	22.4%	21.9%	22.4%
Nondurable goods manufacturing	7.5%	8.2%	8.7%	9.6%	10.4%	11.4%	12.0%	11.3%
Wholesale trade	0.5%	0.5%	0.5%	0.4%	0.6%	0.5%	0.6%	0.6%
Retail trade	6.3%	6.1%	6.1%	5.7%	5.4%	5.4%	5.9%	5.9%
Transportation and warehousing	0.8%	0.8%	0.8%	0.9%	0.9%	1.0%	1.0%	0.9%
Information	0.3%	0.4%	0.4%	0.4%	0.4%	0.4%	0.5%	0.5%
Finance and insurance	1.6%	1.9%	2.1%	2.5%	2.5%	2.3%	2.4%	2.3%
Real estate and rental and leasing	0.8%	0.8%	0.8%	0.8%	0.8%	0.8%	0.7%	0.7%
Professional and technical services	1.9%	2.4%	2.6%	2.5%	2.0%	1.8%	1.4%	--
Management of companies and enterprises	--	--	--	--	--	--	--	--
Administrative and waste services	--	--	--	--	2.0%	1.9%	2.1%	2.3%
Educational services	0.1%	0.1%	0.2%	--	0.4%	0.5%	0.6%	0.5%
Health care and social assistance	7.2%	7.4%	7.6%	--	7.4%	8.0%	8.4%	9.4%
Arts, entertainment, and recreation	1.5%	1.6%	1.2%	1.1%	1.7%	1.8%	1.8%	1.7%
Accommodation and food services	7.2%	6.6%	6.9%	6.9%	8.2%	8.7%	8.7%	8.9%
Other services, except public administration	3.1%	3.2%	3.1%	2.8%	2.5%	2.4%	2.5%	2.6%
Government and government enterprises	18.8%	18.8%	19.4%	19.0%	19.7%	20.1%	19.8%	19.7%
Federal, civilian	0.9%	0.8%	0.8%	0.8%	0.8%	0.9%	0.9%	0.8%
Military	1.0%	1.1%	1.3%	1.3%	1.3%	1.0%	0.6%	0.7%
State and local	17.0%	16.9%	17.3%	17.0%	17.6%	18.2%	18.2%	18.2%
State government	1.2%	1.1%	1.0%	0.9%	1.1%	1.2%	1.2%	1.2%
Local government	15.8%	15.8%	16.3%	16.0%	16.6%	17.0%	17.0%	17.0%

Compensation by NAICS Industry 2001-2008 (Table CA06)

Source: Bureau of Economic Analysis

<http://www.bea.gov/regional/index.htm>

	2001	2002	2003	2004	2005	2006	2007	2008	Percent Change 2001-2008
Emmet, Michigan [26047]									
Compensation of employees, received (\$000)	609,075	648,436	672,939	700,034	717,499	723,113	746,615	760,070	24.8%
Total wage and salary disbursements	508,248	533,575	547,303	566,512	576,603	586,069	606,104	616,604	21.3%
Total supplements to wages and salaries	100,827	114,861	125,636	133,522	140,896	137,044	140,511	143,466	42.3%
Employer contrib. for employee pension & insur. funds	60,606	72,267	81,526	87,093	91,345	86,534	88,815	91,005	50.2%
Employer contributions for government social insurance	40,221	42,594	44,110	46,429	49,551	50,510	51,696	52,461	30.4%
Total average compensation per job (dollars)	34,524	35,504	36,119	36,865	37,624	38,560	39,843	40,173	16.4%
Farm compensation	925	1,009	866	1,000	963	1,022	1,358	1,211	30.9%
Nonfarm compensation	608,150	647,427	672,073	699,034	716,536	722,091	745,257	758,859	24.8%
Private compensation	511,675	539,536	556,841	576,961	587,416	591,493	601,826	611,481	19.5%
Forestry, fishing, related activities, and other 2/	(D)	553	(D)	720	693	992	(D)	(D)	--
Mining	(D)	658	(D)	820	931	680	(D)	(D)	--
Utilities	5,683	6,784	8,144	6,787	6,838	7,428	(D)	(D)	--
Construction	65,498	63,529	64,496	74,664	65,248	56,942	53,613	52,138	-20.4%
Manufacturing	75,600	75,034	79,923	69,896	70,308	66,550	60,722	58,420	-22.7%
Durable goods manufacturing	57,075	57,984	63,428	52,155	52,289	48,171	44,041	41,248	-27.7%
Nondurable goods manufacturing	18,525	17,050	16,495	17,741	18,019	18,379	16,681	17,172	-7.3%
Wholesale trade	16,681	17,401	17,510	19,833	21,647	20,697	22,691	16,955	1.6%
Retail trade	75,824	83,856	87,195	82,404	82,201	82,615	87,658	88,705	17.0%
Transportation and warehousing	10,829	11,182	11,382	10,638	10,558	10,589	(D)	(D)	--
Information	8,941	11,604	11,740	13,062	13,023	11,764	12,926	12,062	34.9%
Finance and insurance	14,248	15,635	17,787	18,619	19,706	21,576	21,417	23,054	61.8%
Real estate and rental and leasing	4,007	4,268	4,512	4,986	5,629	5,686	6,593	6,159	53.7%
Professional and technical services	(D)	(D)	(D)	(D)	(D)	(D)	(D)	(D)	--
Management of companies and enterprises	(D)	(D)	(D)	(D)	(D)	(D)	(D)	(D)	--
Administrative and waste services	15,345	17,769	18,730	24,087	28,451	33,561	31,812	34,183	122.8%
Educational services	2,224	2,388	3,259	3,977	4,003	3,494	3,780	3,939	77.1%
Health care and social assistance	119,362	127,326	124,700	136,112	143,830	155,305	164,112	181,553	52.1%
Arts, entertainment, and recreation	10,845	12,466	12,808	12,450	14,545	15,879	15,569	16,100	48.5%
Accommodation and food services	41,904	43,041	46,107	48,000	46,867	46,266	51,803	48,029	14.6%
Other services, except public administration	19,159	20,787	22,018	23,973	24,387	24,086	24,878	25,998	35.7%
Government and government enterprises	96,475	107,891	115,232	122,073	129,120	130,598	143,431	147,378	52.8%
Federal, civilian	5,920	6,289	7,028	7,303	7,498	7,821	8,246	8,057	36.1%
Military	1,075	1,441	2,019	2,226	2,452	2,312	2,421	2,652	146.7%
State and local	89,480	100,161	106,185	112,544	119,170	120,465	132,764	136,669	52.7%
State government	(D)	(D)	(D)	(D)	15,107	16,524	16,151	16,726	--
Local government	(D)	(D)	(D)	(D)	104,063	103,941	116,613	119,943	--

Compensation by NAICS Industry 2001-2008 (Table CA06)

Source: Bureau of Economic Analysis

Footnotes: <http://www.bea.gov/regional/docs/footnotes.cfm?tablename=CA06N>

	Percent of Total Compensation							
	2001	2002	2003	2004	2005	2006	2007	2008
Emmet, Michigan [26047]								
Compensation of employees, received (\$000)	100.0%	100.0%	100.0%	100.0%	100.0%	100.0%	100.0%	100.0%
Total wage and salary disbursements	83.4%	82.3%	81.3%	80.9%	80.4%	81.0%	81.2%	81.1%
Total supplements to wages and salaries	16.6%	17.7%	18.7%	19.1%	19.6%	19.0%	18.8%	18.9%
Employer contrib. for employee pension & insur. funds	10.0%	11.1%	12.1%	12.4%	12.7%	12.0%	11.9%	12.0%
Employer contributions for government social insurance	6.6%	6.6%	6.6%	6.6%	6.9%	7.0%	6.9%	6.9%
Total average compensation per job (dollars)								
Farm compensation	0.2%	0.2%	0.1%	0.1%	0.1%	0.1%	0.2%	0.2%
Nonfarm compensation	99.8%	99.8%	99.9%	99.9%	99.9%	99.9%	99.8%	99.8%
Private compensation	84.0%	83.2%	82.7%	82.4%	81.9%	81.8%	80.6%	80.5%
Forestry, fishing, related activities, and other 2/	--	0.1%	--	0.1%	0.1%	0.1%	--	--
Mining	--	0.1%	--	0.1%	0.1%	0.1%	--	--
Utilities	0.9%	1.0%	1.2%	1.0%	1.0%	1.0%	--	--
Construction	10.8%	9.8%	9.6%	10.7%	9.1%	7.9%	7.2%	6.9%
Manufacturing	12.4%	11.6%	11.9%	10.0%	9.8%	9.2%	8.1%	7.7%
Durable goods manufacturing	9.4%	8.9%	9.4%	7.5%	7.3%	6.7%	5.9%	5.4%
Nondurable goods manufacturing	3.0%	2.6%	2.5%	2.5%	2.5%	2.5%	2.2%	2.3%
Wholesale trade	2.7%	2.7%	2.6%	2.8%	3.0%	2.9%	3.0%	2.2%
Retail trade	12.4%	12.9%	13.0%	11.8%	11.5%	11.4%	11.7%	11.7%
Transportation and warehousing	1.8%	1.7%	1.7%	1.5%	1.5%	1.5%	--	--
Information	1.5%	1.8%	1.7%	1.9%	1.8%	1.6%	1.7%	1.6%
Finance and insurance	2.3%	2.4%	2.6%	2.7%	2.7%	3.0%	2.9%	3.0%
Real estate and rental and leasing	0.7%	0.7%	0.7%	0.7%	0.8%	0.8%	0.9%	0.8%
Professional and technical services	--	--	--	--	--	--	--	--
Management of companies and enterprises	--	--	--	--	--	--	--	--
Administrative and waste services	2.5%	2.7%	2.8%	3.4%	4.0%	4.6%	4.3%	4.5%
Educational services	0.4%	0.4%	0.5%	0.6%	0.6%	0.5%	0.5%	0.5%
Health care and social assistance	19.6%	19.6%	18.5%	19.4%	20.0%	21.5%	22.0%	23.9%
Arts, entertainment, and recreation	1.8%	1.9%	1.9%	1.8%	2.0%	2.2%	2.1%	2.1%
Accommodation and food services	6.9%	6.6%	6.9%	6.9%	6.5%	6.4%	6.9%	6.3%
Other services, except public administration	3.1%	3.2%	3.3%	3.4%	3.4%	3.3%	3.3%	3.4%
Government and government enterprises	15.8%	16.6%	17.1%	17.4%	18.0%	18.1%	19.2%	19.4%
Federal, civilian	1.0%	1.0%	1.0%	1.0%	1.0%	1.1%	1.1%	1.1%
Military	0.2%	0.2%	0.3%	0.3%	0.3%	0.3%	0.3%	0.3%
State and local	14.7%	15.4%	15.8%	16.1%	16.6%	16.7%	17.8%	18.0%
State government	--	--	--	--	2.1%	2.3%	2.2%	2.2%
Local government	--	--	--	--	14.5%	14.4%	15.6%	15.8%

Compensation by NAICS Industry 2001-2008 (Table CA06)

Source: Bureau of Economic Analysis

<http://www.bea.gov/regional/index.htm>

	2001	2002	2003	2004	2005	2006	2007	2008	Percent Change 2001-2008
Grand Traverse, Michigan [26055]									
Compensation of employees, received (\$000)	1,702,956	1,795,592	1,902,507	1,978,029	2,011,802	2,089,044	2,134,674	2,169,112	27.4%
Total wage and salary disbursements	1,418,824	1,474,294	1,534,639	1,601,122	1,622,936	1,695,697	1,737,307	1,763,642	24.3%
Total supplements to wages and salaries	284,132	321,298	367,868	376,907	388,866	393,347	397,367	405,470	42.7%
Employer contrib. for employee pension & insur. funds	172,726	204,707	245,989	248,503	255,609	253,009	255,620	261,405	51.3%
Employer contributions for government social insurance	111,406	116,591	121,879	128,404	133,257	140,338	141,747	144,065	29.3%
Total average compensation per job (dollars)	35,001	36,243	37,958	39,460	40,561	41,805	42,880	44,315	26.6%
Farm compensation	4,016	4,424	3,354	3,478	2,997	2,883	3,481	3,086	-23.2%
Nonfarm compensation	1,698,940	1,791,168	1,899,153	1,974,551	2,008,805	2,086,161	2,131,193	2,166,026	27.5%
Private compensation	1,450,195	1,526,469	1,612,776	1,669,479	1,691,195	1,760,941	1,795,564	1,821,894	25.6%
Forestry, fishing, related activities, and other 2/	1,652	2,119	1,841	4,309	3,862	4,636	6,096	7,516	355.0%
Mining	26,072	18,865	21,274	23,676	24,540	27,421	36,652	37,265	42.9%
Utilities	19,756	20,597	19,971	21,217	21,327	22,436	22,503	22,727	15.0%
Construction	137,230	149,261	140,567	149,816	154,420	149,417	136,247	129,972	-5.3%
Manufacturing	251,808	246,403	269,923	260,691	258,138	272,669	275,233	274,250	8.9%
Durable goods manufacturing	186,898	183,047	203,490	(D)	(D)	(D)	(D)	(D)	--
Nondurable goods manufacturing	64,910	63,356	66,433	(D)	(D)	(D)	(D)	(D)	--
Wholesale trade	54,419	55,535	56,721	59,480	59,916	64,135	60,185	62,470	14.8%
Retail trade	199,925	226,369	236,173	242,024	234,333	231,259	234,157	231,821	16.0%
Transportation and warehousing	25,563	24,052	25,300	27,064	25,818	26,735	26,574	25,536	-0.1%
Information	43,791	44,466	48,485	51,345	52,151	54,996	57,612	58,703	34.1%
Finance and insurance	92,846	102,649	119,364	122,019	124,756	135,672	134,444	133,541	43.8%
Real estate and rental and leasing	16,428	15,241	16,241	18,136	18,591	19,368	20,124	20,869	27.0%
Professional and technical services	99,762	99,060	109,982	114,374	113,283	126,049	130,206	138,404	38.7%
Management of companies and enterprises	7,217	7,317	7,335	6,895	6,349	7,446	4,082	4,146	-42.6%
Administrative and waste services	49,148	49,216	51,393	51,869	56,773	57,574	57,698	52,468	6.8%
Educational services	7,015	7,612	8,776	10,557	10,916	11,618	12,530	13,329	90.0%
Health care and social assistance	266,515	298,052	320,627	341,865	364,753	383,361	403,947	428,459	60.8%
Arts, entertainment, and recreation	9,861	10,484	10,517	11,105	12,271	13,160	15,004	15,391	56.1%
Accommodation and food services	88,674	90,579	88,131	90,622	85,894	88,878	95,457	96,831	9.2%
Other services, except public administration	52,513	58,592	60,155	62,415	63,104	64,111	66,813	68,196	29.9%
Government and government enterprises	248,745	264,699	286,377	305,072	317,610	325,220	335,629	344,132	38.3%
Federal, civilian	30,123	31,215	33,457	36,658	37,241	39,128	41,541	40,649	34.9%
Military	10,092	12,121	14,171	15,325	16,111	16,526	17,014	17,427	72.7%
State and local	208,530	221,363	238,749	253,089	264,258	269,566	277,074	286,056	37.2%
State government	(D)	(D)	(D)	(D)	31,230	34,151	33,367	34,559	--
Local government	(D)	(D)	(D)	(D)	233,028	235,415	243,707	251,497	--

Compensation by NAICS Industry 2001-2008 (Table CA06)

Source: Bureau of Economic Analysis

Footnotes: <http://www.bea.gov/regional/docs/footnotes.cfm?tablename=CA06N>

	Percent of Total Compensation							
	2001	2002	2003	2004	2005	2006	2007	2008
Grand Traverse, Michigan [26055]								
Compensation of employees, received (\$000)	100.0%	100.0%	100.0%	100.0%	100.0%	100.0%	100.0%	100.0%
Total wage and salary disbursements	83.3%	82.1%	80.7%	80.9%	80.7%	81.2%	81.4%	81.3%
Total supplements to wages and salaries	16.7%	17.9%	19.3%	19.1%	19.3%	18.8%	18.6%	18.7%
Employer contrib. for employee pension & insur. funds	10.1%	11.4%	12.9%	12.6%	12.7%	12.1%	12.0%	12.1%
Employer contributions for government social insurance	6.5%	6.5%	6.4%	6.5%	6.6%	6.7%	6.6%	6.6%
Total average compensation per job (dollars)								
Farm compensation	0.2%	0.2%	0.2%	0.2%	0.1%	0.1%	0.2%	0.1%
Nonfarm compensation	99.8%	99.8%	99.8%	99.8%	99.9%	99.9%	99.8%	99.9%
Private compensation	85.2%	85.0%	84.8%	84.4%	84.1%	84.3%	84.1%	84.0%
Forestry, fishing, related activities, and other 2/	0.1%	0.1%	0.1%	0.2%	0.2%	0.2%	0.3%	0.3%
Mining	1.5%	1.1%	1.1%	1.2%	1.2%	1.3%	1.7%	1.7%
Utilities	1.2%	1.1%	1.0%	1.1%	1.1%	1.1%	1.1%	1.0%
Construction	8.1%	8.3%	7.4%	7.6%	7.7%	7.2%	6.4%	6.0%
Manufacturing	14.8%	13.7%	14.2%	13.2%	12.8%	13.1%	12.9%	12.6%
Durable goods manufacturing	11.0%	10.2%	10.7%	--	--	--	--	--
Nondurable goods manufacturing	3.8%	3.5%	3.5%	--	--	--	--	--
Wholesale trade	3.2%	3.1%	3.0%	3.0%	3.0%	3.1%	2.8%	2.9%
Retail trade	11.7%	12.6%	12.4%	12.2%	11.6%	11.1%	11.0%	10.7%
Transportation and warehousing	1.5%	1.3%	1.3%	1.4%	1.3%	1.3%	1.2%	1.2%
Information	2.6%	2.5%	2.5%	2.6%	2.6%	2.6%	2.7%	2.7%
Finance and insurance	5.5%	5.7%	6.3%	6.2%	6.2%	6.5%	6.3%	6.2%
Real estate and rental and leasing	1.0%	0.8%	0.9%	0.9%	0.9%	0.9%	0.9%	1.0%
Professional and technical services	5.9%	5.5%	5.8%	5.8%	5.6%	6.0%	6.1%	6.4%
Management of companies and enterprises	0.4%	0.4%	0.4%	0.3%	0.3%	0.4%	0.2%	0.2%
Administrative and waste services	2.9%	2.7%	2.7%	2.6%	2.8%	2.8%	2.7%	2.4%
Educational services	0.4%	0.4%	0.5%	0.5%	0.5%	0.6%	0.6%	0.6%
Health care and social assistance	15.7%	16.6%	16.9%	17.3%	18.1%	18.4%	18.9%	19.8%
Arts, entertainment, and recreation	0.6%	0.6%	0.6%	0.6%	0.6%	0.6%	0.7%	0.7%
Accommodation and food services	5.2%	5.0%	4.6%	4.6%	4.3%	4.3%	4.5%	4.5%
Other services, except public administration	3.1%	3.3%	3.2%	3.2%	3.1%	3.1%	3.1%	3.1%
Government and government enterprises	14.6%	14.7%	15.1%	15.4%	15.8%	15.6%	15.7%	15.9%
Federal, civilian	1.8%	1.7%	1.8%	1.9%	1.9%	1.9%	1.9%	1.9%
Military	0.6%	0.7%	0.7%	0.8%	0.8%	0.8%	0.8%	0.8%
State and local	12.2%	12.3%	12.5%	12.8%	13.1%	12.9%	13.0%	13.2%
State government	--	--	--	--	1.6%	1.6%	1.6%	1.6%
Local government	--	--	--	--	11.6%	11.3%	11.4%	11.6%

Compensation by NAICS Industry 2001-2008 (Table CA06)

Source: Bureau of Economic Analysis

<http://www.bea.gov/regional/index.htm>

	2001	2002	2003	2004	2005	2006	2007	2008	Percent Change 2001-2008
Kalkaska, Michigan [26079]									
Compensation of employees, received (\$000)	158,122	156,244	162,278	168,682	171,013	179,351	188,544	198,721	25.7%
Total wage and salary disbursements	130,604	128,550	129,424	136,125	137,037	145,137	153,412	161,870	23.9%
Total supplements to wages and salaries	27,518	27,694	32,854	32,557	33,976	34,214	35,132	36,851	33.9%
Employer contrib. for employee pension & insur. funds	17,130	17,384	22,448	21,670	22,396	22,100	22,428	23,489	37.1%
Employer contributions for government social insurance	10,388	10,310	10,406	10,887	11,580	12,114	12,704	13,362	28.6%
Total average compensation per job (dollars)	36,027	37,541	38,219	39,578	40,476	43,041	45,280	47,247	31.1%
Farm compensation	965	1,066	992	1,232	1,229	1,351	1,853	1,644	70.4%
Nonfarm compensation	157,157	155,178	161,286	167,450	169,784	178,000	186,691	197,077	25.4%
Private compensation	124,742	121,428	126,298	129,982	133,269	139,299	147,405	157,866	26.6%
Forestry, fishing, related activities, and other 2/	315	314	314	386	390	354	372	304	-3.5%
Mining	21,411	18,660	14,556	15,997	14,832	18,024	22,205	25,408	18.7%
Utilities	(D)	(D)	(D)	(D)	(D)	(D)	(D)	(D)	--
Construction	14,886	18,212	18,442	18,671	20,350	18,176	20,222	23,083	55.1%
Manufacturing	23,444	16,873	23,233	20,076	19,869	19,813	20,667	20,118	-14.2%
Durable goods manufacturing	(D)	(D)	(D)	(D)	18,473	(D)	19,357	(D)	--
Nondurable goods manufacturing	(D)	(D)	(D)	(D)	1,396	(D)	1,310	(D)	--
Wholesale trade	9,611	10,640	10,135	10,500	11,401	11,538	11,531	12,599	31.1%
Retail trade	11,688	12,843	13,561	13,281	13,735	13,554	13,497	12,433	6.4%
Transportation and warehousing	(D)	(D)	(D)	(D)	(D)	(D)	(D)	(D)	--
Information	(D)	858	(D)	767	1,040	1,171	1,539	1,323	--
Finance and insurance	1,681	2,117	2,505	2,303	2,462	2,443	2,150	2,137	27.1%
Real estate and rental and leasing	(D)	714	(D)	693	734	688	811	935	--
Professional and technical services	1,490	1,521	1,314	1,171	1,686	1,463	1,594	3,175	113.1%
Management of companies and enterprises	0	0	0	0	0	0	0	0	--
Administrative and waste services	14,370	13,191	15,382	19,910	20,344	22,657	21,721	23,901	66.3%
Educational services	(D)	(D)	520	585	613	645	697	754	--
Health care and social assistance	(D)	(D)	4,961	4,959	5,989	6,422	7,064	7,411	--
Arts, entertainment, and recreation	1,041	(D)	(D)	1,466	1,056	1,018	712	878	-15.7%
Accommodation and food services	4,605	5,013	4,428	4,115	3,880	3,928	4,197	3,848	-16.4%
Other services, except public administration	6,495	6,007	6,021	6,663	6,129	6,948	7,257	8,380	29.0%
Government and government enterprises	32,415	33,750	34,988	37,468	36,515	38,701	39,286	39,211	21.0%
Federal, civilian	2,022	2,086	1,644	1,686	1,716	1,809	1,804	1,738	-14.0%
Military	529	711	1,007	1,100	1,216	1,141	1,182	1,301	145.9%
State and local	29,864	30,953	32,337	34,682	33,583	35,751	36,300	36,172	21.1%
State government	4,617	4,625	4,306	4,316	4,874	5,328	5,207	5,391	16.8%
Local government	25,247	26,328	28,031	30,366	28,709	30,423	31,093	30,781	21.9%

Compensation by NAICS Industry 2001-2008 (Table CA06)

Source: Bureau of Economic Analysis

Footnotes: <http://www.bea.gov/regional/docs/footnotes.cfm?tablename=CA06N>

	Percent of Total Compensation							
	2001	2002	2003	2004	2005	2006	2007	2008
Kalkaska, Michigan [26079]								
Compensation of employees, received (\$000)	100.0%	100.0%	100.0%	100.0%	100.0%	100.0%	100.0%	100.0%
Total wage and salary disbursements	82.6%	82.3%	79.8%	80.7%	80.1%	80.9%	81.4%	81.5%
Total supplements to wages and salaries	17.4%	17.7%	20.2%	19.3%	19.9%	19.1%	18.6%	18.5%
Employer contrib. for employee pension & insur. funds	10.8%	11.1%	13.8%	12.8%	13.1%	12.3%	11.9%	11.8%
Employer contributions for government social insurance	6.6%	6.6%	6.4%	6.5%	6.8%	6.8%	6.7%	6.7%
Total average compensation per job (dollars)								
Farm compensation	0.6%	0.7%	0.6%	0.7%	0.7%	0.8%	1.0%	0.8%
Nonfarm compensation	99.4%	99.3%	99.4%	99.3%	99.3%	99.2%	99.0%	99.2%
Private compensation	78.9%	77.7%	77.8%	77.1%	77.9%	77.7%	78.2%	79.4%
Forestry, fishing, related activities, and other 2/	0.2%	0.2%	0.2%	0.2%	0.2%	0.2%	0.2%	0.2%
Mining	13.5%	11.9%	9.0%	9.5%	8.7%	10.0%	11.8%	12.8%
Utilities	--	--	--	--	--	--	--	--
Construction	9.4%	11.7%	11.4%	11.1%	11.9%	10.1%	10.7%	11.6%
Manufacturing	14.8%	10.8%	14.3%	11.9%	11.6%	11.0%	11.0%	10.1%
Durable goods manufacturing	--	--	--	--	10.8%	--	10.3%	--
Nondurable goods manufacturing	--	--	--	--	0.8%	--	0.7%	--
Wholesale trade	6.1%	6.8%	6.2%	6.2%	6.7%	6.4%	6.1%	6.3%
Retail trade	7.4%	8.2%	8.4%	7.9%	8.0%	7.6%	7.2%	6.3%
Transportation and warehousing	--	--	--	--	--	--	--	--
Information	--	0.5%	--	0.5%	0.6%	0.7%	0.8%	0.7%
Finance and insurance	1.1%	1.4%	1.5%	1.4%	1.4%	1.4%	1.1%	1.1%
Real estate and rental and leasing	--	0.5%	--	0.4%	0.4%	0.4%	0.4%	0.5%
Professional and technical services	0.9%	1.0%	0.8%	0.7%	1.0%	0.8%	0.8%	1.6%
Management of companies and enterprises	--	--	--	--	--	--	--	--
Administrative and waste services	9.1%	8.4%	9.5%	11.8%	11.9%	12.6%	11.5%	12.0%
Educational services	--	--	0.3%	0.3%	0.4%	0.4%	0.4%	0.4%
Health care and social assistance	--	--	3.1%	2.9%	3.5%	3.6%	3.7%	3.7%
Arts, entertainment, and recreation	0.7%	--	--	0.9%	0.6%	0.6%	0.4%	0.4%
Accommodation and food services	2.9%	3.2%	2.7%	2.4%	2.3%	2.2%	2.2%	1.9%
Other services, except public administration	4.1%	3.8%	3.7%	4.0%	3.6%	3.9%	3.8%	4.2%
Government and government enterprises	20.5%	21.6%	21.6%	22.2%	21.4%	21.6%	20.8%	19.7%
Federal, civilian	1.3%	1.3%	1.0%	1.0%	1.0%	1.0%	1.0%	0.9%
Military	0.3%	0.5%	0.6%	0.7%	0.7%	0.6%	0.6%	0.7%
State and local	18.9%	19.8%	19.9%	20.6%	19.6%	19.9%	19.3%	18.2%
State government	2.9%	3.0%	2.7%	2.6%	2.9%	3.0%	2.8%	2.7%
Local government	16.0%	16.9%	17.3%	18.0%	16.8%	17.0%	16.5%	15.5%

Compensation by NAICS Industry 2001-2008 (Table CA06)

Source: Bureau of Economic Analysis

<http://www.bea.gov/regional/index.htm>

	2001	2002	2003	2004	2005	2006	2007	2008	Percent Change 2001-2008
Leelanau, Michigan [26089]									
Compensation of employees, received (\$000)	202,017	203,271	208,035	213,804	225,342	225,143	230,767	233,147	15.4%
Total wage and salary disbursements	164,519	164,894	167,246	169,757	177,429	178,729	183,299	184,369	12.1%
Total supplements to wages and salaries	37,498	38,377	40,789	44,047	47,913	46,414	47,468	48,778	30.1%
Employer contrib. for employee pension & insur. funds	24,644	25,249	27,322	30,333	33,146	31,081	31,834	32,978	33.8%
Employer contributions for government social insurance	12,854	13,128	13,467	13,714	14,767	15,333	15,634	15,800	22.9%
Total average compensation per job (dollars)	30,470	31,393	32,948	33,937	34,195	34,410	35,568	36,463	19.7%
Farm compensation	5,276	5,070	4,620	5,676	5,594	6,087	8,255	7,288	38.1%
Nonfarm compensation	196,741	198,201	203,415	208,128	219,748	219,056	222,512	225,859	14.8%
Private compensation	112,075	114,924	119,943	124,839	133,861	135,054	136,335	135,062	20.5%
Forestry, fishing, related activities, and other 2/	(D)	(D)	(D)	(D)	(D)	(D)	(D)	(D)	--
Mining	0	(D)	(D)	(D)	(D)	(D)	(D)	(D)	--
Utilities	0	0	0	0	0	0	0	0	--
Construction	27,733	29,875	29,773	30,681	30,450	29,762	27,538	24,246	-12.6%
Manufacturing	7,955	7,014	7,243	6,237	6,437	7,120	7,710	7,529	-5.4%
Durable goods manufacturing	5,397	4,457	4,323	2,973	2,658	2,734	2,735	2,418	-55.2%
Nondurable goods manufacturing	2,558	2,557	2,920	3,264	3,779	4,386	4,975	5,111	99.8%
Wholesale trade	1,438	772	933	1,651	2,209	2,593	2,343	2,544	76.9%
Retail trade	13,028	12,662	12,815	14,246	15,169	14,261	14,124	13,905	6.7%
Transportation and warehousing	1,679	891	713	755	930	1,352	1,370	2,313	37.8%
Information	1,059	1,102	1,266	1,234	1,350	1,567	1,789	1,588	50.0%
Finance and insurance	9,648	7,669	8,467	10,575	12,251	10,075	9,535	9,232	-4.3%
Real estate and rental and leasing	1,107	1,284	1,228	1,524	1,493	1,361	1,193	1,049	-5.2%
Professional and technical services	7,108	8,183	9,380	8,672	11,585	10,050	10,724	10,912	53.5%
Management of companies and enterprises	(D)	(D)	(D)	(D)	(D)	(D)	(D)	(D)	--
Administrative and waste services	(D)	(D)	(D)	(D)	(D)	(D)	(D)	(D)	--
Educational services	1,649	1,860	2,237	2,613	2,625	2,712	2,755	3,003	82.1%
Health care and social assistance	10,104	12,321	12,869	11,360	11,260	14,860	16,822	18,066	78.8%
Arts, entertainment, and recreation	2,107	2,362	2,190	2,500	2,740	3,342	3,445	3,443	63.4%
Accommodation and food services	14,934	16,681	17,447	17,960	19,102	18,765	18,885	19,216	28.7%
Other services, except public administration	6,036	6,636	6,690	7,116	7,345	7,446	7,868	8,123	34.6%
Government and government enterprises	84,666	83,277	83,472	83,289	85,887	84,002	86,177	90,797	7.2%
Federal, civilian	7,377	6,993	6,863	7,486	7,775	8,034	8,566	8,856	20.0%
Military	674	904	1,288	1,409	1,551	1,448	1,507	1,661	146.4%
State and local	76,615	75,380	75,321	74,394	76,561	74,520	76,104	80,280	4.8%
State government	1,912	1,918	1,783	1,791	2,023	2,209	2,158	2,236	16.9%
Local government	74,703	73,462	73,538	72,603	74,538	72,311	73,946	78,044	4.5%

Compensation by NAICS Industry 2001-2008 (Table CA06)

Source: Bureau of Economic Analysis

Footnotes: <http://www.bea.gov/regional/docs/footnotes.cfm?tablename=CA06N>

	Percent of Total Compensation							
	2001	2002	2003	2004	2005	2006	2007	2008
Leelanau, Michigan [26089]								
Compensation of employees, received (\$000)	100.0%	100.0%	100.0%	100.0%	100.0%	100.0%	100.0%	100.0%
Total wage and salary disbursements	81.4%	81.1%	80.4%	79.4%	78.7%	79.4%	79.4%	79.1%
Total supplements to wages and salaries	18.6%	18.9%	19.6%	20.6%	21.3%	20.6%	20.6%	20.9%
Employer contrib. for employee pension & insur. funds	12.2%	12.4%	13.1%	14.2%	14.7%	13.8%	13.8%	14.1%
Employer contributions for government social insurance	6.4%	6.5%	6.5%	6.4%	6.6%	6.8%	6.8%	6.8%
Total average compensation per job (dollars)								
Farm compensation	2.6%	2.5%	2.2%	2.7%	2.5%	2.7%	3.6%	3.1%
Nonfarm compensation	97.4%	97.5%	97.8%	97.3%	97.5%	97.3%	96.4%	96.9%
Private compensation	55.5%	56.5%	57.7%	58.4%	59.4%	60.0%	59.1%	57.9%
Forestry, fishing, related activities, and other 2/	--	--	--	--	--	--	--	--
Mining	--	--	--	--	--	--	--	--
Utilities	--	--	--	--	--	--	--	--
Construction	13.7%	14.7%	14.3%	14.4%	13.5%	13.2%	11.9%	10.4%
Manufacturing	3.9%	3.5%	3.5%	2.9%	2.9%	3.2%	3.3%	3.2%
Durable goods manufacturing	2.7%	2.2%	2.1%	1.4%	1.2%	1.2%	1.2%	1.0%
Nondurable goods manufacturing	1.3%	1.3%	1.4%	1.5%	1.7%	1.9%	2.2%	2.2%
Wholesale trade	0.7%	0.4%	0.4%	0.8%	1.0%	1.2%	1.0%	1.1%
Retail trade	6.4%	6.2%	6.2%	6.7%	6.7%	6.3%	6.1%	6.0%
Transportation and warehousing	0.8%	0.4%	0.3%	0.4%	0.4%	0.6%	0.6%	1.0%
Information	0.5%	0.5%	0.6%	0.6%	0.6%	0.7%	0.8%	0.7%
Finance and insurance	4.8%	3.8%	4.1%	4.9%	5.4%	4.5%	4.1%	4.0%
Real estate and rental and leasing	0.5%	0.6%	0.6%	0.7%	0.7%	0.6%	0.5%	0.4%
Professional and technical services	3.5%	4.0%	4.5%	4.1%	5.1%	4.5%	4.6%	4.7%
Management of companies and enterprises	--	--	--	--	--	--	--	--
Administrative and waste services	--	--	--	--	--	--	--	--
Educational services	0.8%	0.9%	1.1%	1.2%	1.2%	1.2%	1.2%	1.3%
Health care and social assistance	5.0%	6.1%	6.2%	5.3%	5.0%	6.6%	7.3%	7.7%
Arts, entertainment, and recreation	1.0%	1.2%	1.1%	1.2%	1.2%	1.5%	1.5%	1.5%
Accommodation and food services	7.4%	8.2%	8.4%	8.4%	8.5%	8.3%	8.2%	8.2%
Other services, except public administration	3.0%	3.3%	3.2%	3.3%	3.3%	3.3%	3.4%	3.5%
Government and government enterprises	41.9%	41.0%	40.1%	39.0%	38.1%	37.3%	37.3%	38.9%
Federal, civilian	3.7%	3.4%	3.3%	3.5%	3.5%	3.6%	3.7%	3.8%
Military	0.3%	0.4%	0.6%	0.7%	0.7%	0.6%	0.7%	0.7%
State and local	37.9%	37.1%	36.2%	34.8%	34.0%	33.1%	33.0%	34.4%
State government	0.9%	0.9%	0.9%	0.8%	0.9%	1.0%	0.9%	1.0%
Local government	37.0%	36.1%	35.3%	34.0%	33.1%	32.1%	32.0%	33.5%

Compensation by NAICS Industry 2001-2008 (Table CA06)

Source: Bureau of Economic Analysis

<http://www.bea.gov/regional/index.htm>

	2001	2002	2003	2004	2005	2006	2007	2008	Percent Change 2001-2008
Manistee, Michigan [26101]									
Compensation of employees, received (\$000)	292,586	295,766	304,766	310,821	323,914	331,365	336,420	345,409	18.1%
Total wage and salary disbursements	238,600	238,136	241,561	245,138	253,203	261,096	265,711	272,495	14.2%
Total supplements to wages and salaries	53,986	57,630	63,205	65,683	70,711	70,269	70,709	72,914	35.1%
Employer contrib. for employee pension & insur. funds	35,319	39,121	44,314	46,400	50,225	48,971	49,090	50,803	43.8%
Employer contributions for government social insurance	18,667	18,509	18,891	19,283	20,486	21,298	21,619	22,111	18.4%
Total average compensation per job (dollars)	32,061	32,859	35,103	36,537	37,369	38,852	40,126	41,975	30.9%
Farm compensation	1,664	1,566	1,218	1,288	1,131	1,107	1,369	1,248	-25.0%
Nonfarm compensation	290,922	294,200	303,548	309,533	322,783	330,258	335,051	344,161	18.3%
Private compensation	185,733	179,886	184,766	180,006	184,002	184,123	184,411	188,164	1.3%
Forestry, fishing, related activities, and other 2/	1,653	1,506	1,625	1,895	2,031	2,513	2,641	2,525	52.8%
Mining	3,269	1,281	1,352	1,261	1,244	1,378	1,170	1,719	-47.4%
Utilities	(D)	(D)	(D)	(D)	(D)	(D)	(D)	(D)	--
Construction	14,713	10,660	9,490	9,605	9,744	10,448	9,974	9,734	-33.8%
Manufacturing	66,024	63,403	65,522	61,099	60,355	60,958	58,877	61,189	-7.3%
Durable goods manufacturing	21,123	19,086	20,080	19,817	19,404	20,008	19,816	20,223	-4.3%
Nondurable goods manufacturing	44,901	44,317	45,442	41,282	40,951	40,950	39,061	40,966	-8.8%
Wholesale trade	4,088	4,409	5,573	6,182	7,122	6,852	7,799	7,792	90.6%
Retail trade	22,991	23,548	24,135	23,100	23,822	23,127	24,175	24,280	5.6%
Transportation and warehousing	(D)	(D)	(D)	(D)	(D)	(D)	(D)	(D)	--
Information	3,732	4,011	4,076	3,676	3,646	3,622	3,853	3,787	1.5%
Finance and insurance	4,170	5,374	5,930	5,698	5,552	5,332	5,522	5,711	37.0%
Real estate and rental and leasing	948	808	758	1,209	1,305	1,434	1,406	1,009	6.4%
Professional and technical services	4,455	4,469	4,134	3,018	3,429	3,284	3,091	3,124	-29.9%
Management of companies and enterprises	0	0	0	0	0	0	0	0	--
Administrative and waste services	8,395	9,311	10,960	10,489	10,242	9,958	10,378	12,361	47.2%
Educational services	(D)	(D)	(D)	(D)	(D)	(D)	(D)	(D)	--
Health care and social assistance	(D)	(D)	(D)	(D)	(D)	(D)	(D)	(D)	--
Arts, entertainment, and recreation	1,792	1,623	1,882	1,763	2,938	2,776	3,109	3,008	67.9%
Accommodation and food services	9,672	10,231	9,595	11,020	11,513	11,588	11,526	10,782	11.5%
Other services, except public administration	8,834	9,391	9,789	10,075	10,404	10,483	11,016	11,269	27.6%
Government and government enterprises	105,189	114,314	118,782	129,527	138,781	146,135	150,640	155,997	48.3%
Federal, civilian	5,466	5,928	6,309	6,441	6,800	7,305	7,311	7,324	34.0%
Military	1,393	2,094	2,632	2,709	2,999	2,919	2,920	3,211	130.5%
State and local	98,330	106,292	109,841	120,377	128,982	135,911	140,409	145,462	47.9%
State government	(D)	(D)	(D)	(D)	21,651	23,698	23,144	23,972	--
Local government	(D)	(D)	(D)	(D)	107,331	112,213	117,265	121,490	--

Compensation by NAICS Industry 2001-2008 (Table CA06)

Source: Bureau of Economic Analysis

Footnotes: <http://www.bea.gov/regional/docs/footnotes.cfm?tablename=CA06N>

	Percent of Total Compensation							
	2001	2002	2003	2004	2005	2006	2007	2008
Manistee, Michigan [26101]								
Compensation of employees, received (\$000)	100.0%	100.0%	100.0%	100.0%	100.0%	100.0%	100.0%	100.0%
Total wage and salary disbursements	81.5%	80.5%	79.3%	78.9%	78.2%	78.8%	79.0%	78.9%
Total supplements to wages and salaries	18.5%	19.5%	20.7%	21.1%	21.8%	21.2%	21.0%	21.1%
Employer contrib. for employee pension & insur. funds	12.1%	13.2%	14.5%	14.9%	15.5%	14.8%	14.6%	14.7%
Employer contributions for government social insurance	6.4%	6.3%	6.2%	6.2%	6.3%	6.4%	6.4%	6.4%
Total average compensation per job (dollars)								
Farm compensation	0.6%	0.5%	0.4%	0.4%	0.3%	0.3%	0.4%	0.4%
Nonfarm compensation	99.4%	99.5%	99.6%	99.6%	99.7%	99.7%	99.6%	99.6%
Private compensation	63.5%	60.8%	60.6%	57.9%	56.8%	55.6%	54.8%	54.5%
Forestry, fishing, related activities, and other 2/	0.6%	0.5%	0.5%	0.6%	0.6%	0.8%	0.8%	0.7%
Mining	1.1%	0.4%	0.4%	0.4%	0.4%	0.4%	0.3%	0.5%
Utilities	--	--	--	--	--	--	--	--
Construction	5.0%	3.6%	3.1%	3.1%	3.0%	3.2%	3.0%	2.8%
Manufacturing	22.6%	21.4%	21.5%	19.7%	18.6%	18.4%	17.5%	17.7%
Durable goods manufacturing	7.2%	6.5%	6.6%	6.4%	6.0%	6.0%	5.9%	5.9%
Nondurable goods manufacturing	15.3%	15.0%	14.9%	13.3%	12.6%	12.4%	11.6%	11.9%
Wholesale trade	1.4%	1.5%	1.8%	2.0%	2.2%	2.1%	2.3%	2.3%
Retail trade	7.9%	8.0%	7.9%	7.4%	7.4%	7.0%	7.2%	7.0%
Transportation and warehousing	--	--	--	--	--	--	--	--
Information	1.3%	1.4%	1.3%	1.2%	1.1%	1.1%	1.1%	1.1%
Finance and insurance	1.4%	1.8%	1.9%	1.8%	1.7%	1.6%	1.6%	1.7%
Real estate and rental and leasing	0.3%	0.3%	0.2%	0.4%	0.4%	0.4%	0.4%	0.3%
Professional and technical services	1.5%	1.5%	1.4%	1.0%	1.1%	1.0%	0.9%	0.9%
Management of companies and enterprises	--	--	--	--	--	--	--	--
Administrative and waste services	2.9%	3.1%	3.6%	3.4%	3.2%	3.0%	3.1%	3.6%
Educational services	--	--	--	--	--	--	--	--
Health care and social assistance	--	--	--	--	--	--	--	--
Arts, entertainment, and recreation	0.6%	0.5%	0.6%	0.6%	0.9%	0.8%	0.9%	0.9%
Accommodation and food services	3.3%	3.5%	3.1%	3.5%	3.6%	3.5%	3.4%	3.1%
Other services, except public administration	3.0%	3.2%	3.2%	3.2%	3.2%	3.2%	3.3%	3.3%
Government and government enterprises	36.0%	38.7%	39.0%	41.7%	42.8%	44.1%	44.8%	45.2%
Federal, civilian	1.9%	2.0%	2.1%	2.1%	2.1%	2.2%	2.2%	2.1%
Military	0.5%	0.7%	0.9%	0.9%	0.9%	0.9%	0.9%	0.9%
State and local	33.6%	35.9%	36.0%	38.7%	39.8%	41.0%	41.7%	42.1%
State government	--	--	--	--	6.7%	7.2%	6.9%	6.9%
Local government	--	--	--	--	33.1%	33.9%	34.9%	35.2%

Compensation by NAICS Industry 2001-2008 (Table CA06)

Source: Bureau of Economic Analysis

<http://www.bea.gov/regional/index.htm>

	2001	2002	2003	2004	2005	2006	2007	2008	Percent Change 2001-2008
Missaukee, Michigan [26113]									
Compensation of employees, received (\$000)	84,118	90,421	92,861	104,138	106,519	109,508	113,797	114,266	35.8%
Total wage and salary disbursements	68,946	73,648	74,769	83,429	85,298	88,040	91,703	91,935	33.3%
Total supplements to wages and salaries	15,172	16,773	18,092	20,709	21,221	21,468	22,094	22,331	47.2%
Employer contrib. for employee pension & insur. funds	9,578	10,938	12,019	13,921	14,213	14,067	14,424	14,690	53.4%
Employer contributions for government social insurance	5,594	5,835	6,073	6,788	7,008	7,401	7,670	7,641	36.6%
Total average compensation per job (dollars)	27,625	29,714	30,789	33,292	34,163	34,709	36,046	37,588	36.1%
Farm compensation	6,874	7,610	6,799	8,213	8,011	8,639	11,640	10,309	50.0%
Nonfarm compensation	77,244	82,811	86,062	95,925	98,508	100,869	102,157	103,957	34.6%
Private compensation	57,725	62,508	64,689	73,587	75,314	77,292	78,339	79,581	37.9%
Forestry, fishing, related activities, and other 2/	3,068	3,649	4,027	(D)	(D)	(D)	(D)	(D)	--
Mining	1,379	1,431	1,595	(D)	(D)	(D)	(D)	(D)	--
Utilities	(D)	(D)	(D)	(D)	(D)	(D)	(D)	(D)	--
Construction	5,158	6,061	6,355	6,217	6,117	6,427	5,665	5,563	7.9%
Manufacturing	19,159	20,336	20,725	21,885	24,568	23,050	24,228	21,473	12.1%
Durable goods manufacturing	(D)	17,622	18,269	(D)	(D)	19,263	19,889	17,438	--
Nondurable goods manufacturing	(D)	2,714	2,456	(D)	(D)	3,787	4,339	4,035	--
Wholesale trade	2,973	3,343	3,704	4,514	4,689	4,823	4,693	5,296	78.1%
Retail trade	7,415	7,753	7,354	6,745	6,316	6,706	6,511	8,639	16.5%
Transportation and warehousing	(D)	(D)	(D)	(D)	(D)	(D)	(D)	(D)	--
Information	(D)	(D)	(D)	(D)	(D)	(D)	(D)	(D)	--
Finance and insurance	1,968	2,330	2,640	2,825	2,740	3,118	3,029	3,187	61.9%
Real estate and rental and leasing	599	738	641	545	728	445	426	353	-41.1%
Professional and technical services	942	(D)	1,076	1,046	1,083	(D)	1,304	1,263	34.1%
Management of companies and enterprises	0	0	0	0	0	0	0	0	--
Administrative and waste services	(D)	(D)	(D)	(D)	692	743	(D)	(D)	--
Educational services	(D)	(D)	(D)	(D)	(D)	(D)	(D)	(D)	--
Health care and social assistance	(D)	(D)	(D)	(D)	(D)	(D)	(D)	(D)	--
Arts, entertainment, and recreation	232	271	320	334	372	370	286	(D)	--
Accommodation and food services	1,845	1,735	1,788	2,429	(D)	2,000	1,890	(D)	--
Other services, except public administration	2,919	3,688	4,054	4,376	(D)	4,477	4,832	5,022	72.0%
Government and government enterprises	19,519	20,303	21,373	22,338	23,194	23,577	23,818	24,376	24.9%
Federal, civilian	1,393	1,431	1,310	1,535	1,681	1,971	2,110	2,194	57.5%
Military	462	629	889	974	1,070	993	1,034	1,143	147.4%
State and local	17,664	18,243	19,174	19,829	20,443	20,613	20,674	21,039	19.1%
State government	1,015	1,015	950	956	(D)	(D)	(D)	(D)	--
Local government	16,649	17,228	18,224	18,873	(D)	(D)	(D)	(D)	--

Compensation by NAICS Industry 2001-2008 (Table CA06)

Source: Bureau of Economic Analysis

Footnotes: <http://www.bea.gov/regional/docs/footnotes.cfm?tablename=CA06N>

	Percent of Total Compensation							
	2001	2002	2003	2004	2005	2006	2007	2008
Missaukee, Michigan [26113]								
Compensation of employees, received (\$000)	100.0%	100.0%	100.0%	100.0%	100.0%	100.0%	100.0%	100.0%
Total wage and salary disbursements	82.0%	81.5%	80.5%	80.1%	80.1%	80.4%	80.6%	80.5%
Total supplements to wages and salaries	18.0%	18.5%	19.5%	19.9%	19.9%	19.6%	19.4%	19.5%
Employer contrib. for employee pension & insur. funds	11.4%	12.1%	12.9%	13.4%	13.3%	12.8%	12.7%	12.9%
Employer contributions for government social insurance	6.7%	6.5%	6.5%	6.5%	6.6%	6.8%	6.7%	6.7%
Total average compensation per job (dollars)								
Farm compensation	8.2%	8.4%	7.3%	7.9%	7.5%	7.9%	10.2%	9.0%
Nonfarm compensation	91.8%	91.6%	92.7%	92.1%	92.5%	92.1%	89.8%	91.0%
Private compensation	68.6%	69.1%	69.7%	70.7%	70.7%	70.6%	68.8%	69.6%
Forestry, fishing, related activities, and other 2/	3.6%	4.0%	4.3%	--	--	--	--	--
Mining	1.6%	1.6%	1.7%	--	--	--	--	--
Utilities	--	--	--	--	--	--	--	--
Construction	6.1%	6.7%	6.8%	6.0%	5.7%	5.9%	5.0%	4.9%
Manufacturing	22.8%	22.5%	22.3%	21.0%	23.1%	21.0%	21.3%	18.8%
Durable goods manufacturing	--	19.5%	19.7%	#VALUE!	#VALUE!	17.6%	17.5%	15.3%
Nondurable goods manufacturing	--	3.0%	2.6%	#VALUE!	#VALUE!	3.5%	3.8%	3.5%
Wholesale trade	3.5%	3.7%	4.0%	4.3%	4.4%	4.4%	4.1%	4.6%
Retail trade	8.8%	8.6%	7.9%	6.5%	5.9%	6.1%	5.7%	7.6%
Transportation and warehousing	--	--	--	--	--	--	--	--
Information	--	--	--	--	--	--	--	--
Finance and insurance	2.3%	2.6%	2.8%	2.7%	2.6%	2.8%	2.7%	2.8%
Real estate and rental and leasing	0.7%	0.8%	0.7%	0.5%	0.7%	0.4%	0.4%	0.3%
Professional and technical services	1.1%	--	1.2%	1.0%	1.0%	--	1.1%	1.1%
Management of companies and enterprises	--	--	--	--	--	--	--	--
Administrative and waste services	--	--	--	--	0.6%	0.7%	--	--
Educational services	--	--	--	--	--	--	--	--
Health care and social assistance	--	--	--	--	--	--	--	--
Arts, entertainment, and recreation	0.3%	0.3%	0.3%	0.3%	0.3%	0.3%	0.3%	--
Accommodation and food services	2.2%	1.9%	1.9%	2.3%	#VALUE!	1.8%	1.7%	--
Other services, except public administration	3.5%	4.1%	4.4%	4.2%	#VALUE!	4.1%	4.2%	4.4%
Government and government enterprises	23.2%	22.5%	23.0%	21.5%	21.8%	21.5%	20.9%	21.3%
Federal, civilian	1.7%	1.6%	1.4%	1.5%	1.6%	1.8%	1.9%	1.9%
Military	0.5%	0.7%	1.0%	0.9%	1.0%	0.9%	0.9%	1.0%
State and local	21.0%	20.2%	20.6%	19.0%	19.2%	18.8%	18.2%	18.4%
State government	1.2%	1.1%	1.0%	0.9%	--	--	--	--
Local government	19.8%	19.1%	19.6%	18.1%	--	--	--	--

Compensation by NAICS Industry 2001-2008 (Table CA06)

Source: Bureau of Economic Analysis

<http://www.bea.gov/regional/index.htm>

	2001	2002	2003	2004	2005	2006	2007	2008	Percent Change 2001-2008
Wexford, Michigan [26165]									
Compensation of employees, received (\$000)	525,878	554,116	571,038	597,841	607,907	618,707	607,489	596,211	13.4%
Total wage and salary disbursements	433,836	451,365	455,572	477,901	482,708	495,782	486,754	476,615	9.9%
Total supplements to wages and salaries	92,042	102,751	115,466	119,940	125,199	122,925	120,735	119,596	29.9%
Employer contrib. for employee pension & insur. funds	57,163	67,015	79,278	81,149	84,406	80,843	80,107	79,656	39.3%
Employer contributions for government social insurance	34,879	35,736	36,188	38,791	40,793	42,082	40,628	39,940	14.5%
Total average compensation per job (dollars)	31,737	33,534	36,000	37,142	38,315	39,288	39,901	40,767	28.5%
Farm compensation	1,311	1,331	1,009	1,035	879	828	986	876	-33.2%
Nonfarm compensation	524,567	552,785	570,029	596,806	607,028	617,879	606,503	595,335	13.5%
Private compensation	439,170	462,845	478,641	502,697	501,982	511,536	500,138	487,894	11.1%
Forestry, fishing, related activities, and other 2/	(D)	(D)	2,992	3,284	3,208	3,328	2,788	2,977	--
Mining	(D)	(D)	1,367	1,549	1,592	1,380	1,281	1,531	--
Utilities	(D)	(D)	(D)	(D)	(D)	(D)	(D)	(D)	--
Construction	13,125	13,056	13,774	13,352	13,126	12,322	12,221	11,173	-14.9%
Manufacturing	164,495	161,464	173,210	180,383	180,972	180,034	178,440	163,721	-0.5%
Durable goods manufacturing	111,279	108,476	120,160	124,320	126,064	127,462	130,308	123,213	10.7%
Nondurable goods manufacturing	53,216	52,988	53,050	56,063	54,908	52,572	48,132	40,508	-23.9%
Wholesale trade	(D)	(D)	(D)	(D)	(D)	(D)	(D)	(D)	--
Retail trade	52,172	55,492	56,856	56,370	56,585	57,142	55,775	53,567	2.7%
Transportation and warehousing	19,004	21,388	18,422	17,287	17,034	17,137	18,276	16,397	-13.7%
Information	11,690	12,145	14,823	13,251	14,707	14,194	14,606	12,852	9.9%
Finance and insurance	7,843	8,665	8,977	9,245	9,149	12,716	13,438	14,358	83.1%
Real estate and rental and leasing	1,798	1,879	1,754	2,022	1,841	1,960	2,116	2,307	28.3%
Professional and technical services	(D)	(D)	(D)	(D)	31,922	(D)	(D)	(D)	--
Management of companies and enterprises	(D)	(D)	(D)	(D)	(D)	(D)	(D)	(D)	--
Administrative and waste services	18,437	16,925	14,994	(D)	(D)	16,909	16,562	16,481	-10.6%
Educational services	4,689	4,399	3,740	4,598	5,236	5,462	5,788	6,037	28.7%
Health care and social assistance	52,672	63,488	65,940	73,243	76,356	79,400	82,129	92,507	75.6%
Arts, entertainment, and recreation	2,443	2,739	2,711	2,349	(D)	3,153	3,094	2,932	20.0%
Accommodation and food services	23,514	24,794	24,480	24,974	22,969	21,132	22,558	22,287	-5.2%
Other services, except public administration	16,340	18,469	18,279	19,515	19,750	20,259	19,213	19,172	17.3%
Government and government enterprises	85,397	89,940	91,388	94,109	105,046	106,343	106,365	107,441	25.8%
Federal, civilian	10,132	11,183	11,453	12,006	12,549	12,402	11,903	11,823	16.7%
Military	1,046	1,368	1,916	2,108	2,346	2,214	2,289	2,516	140.5%
State and local	74,219	77,389	78,019	79,995	90,151	91,727	92,173	93,102	25.4%
State government	(D)	(D)	(D)	(D)	14,078	15,395	15,043	15,581	--
Local government	(D)	(D)	(D)	(D)	76,073	76,332	77,130	77,521	--

Compensation by NAICS Industry 2001-2008 (Table CA06)

Source: Bureau of Economic Analysis

Footnotes: <http://www.bea.gov/regional/docs/footnotes.cfm?tablename=CA06N>

	Percent of Total Compensation							
	2001	2002	2003	2004	2005	2006	2007	2008
Wexford, Michigan [26165]								
Compensation of employees, received (\$000)	100.0%	100.0%	100.0%	100.0%	100.0%	100.0%	100.0%	100.0%
Total wage and salary disbursements	82.5%	81.5%	79.8%	79.9%	79.4%	80.1%	80.1%	79.9%
Total supplements to wages and salaries	17.5%	18.5%	20.2%	20.1%	20.6%	19.9%	19.9%	20.1%
Employer contrib. for employee pension & insur. funds	10.9%	12.1%	13.9%	13.6%	13.9%	13.1%	13.2%	13.4%
Employer contributions for government social insurance	6.6%	6.4%	6.3%	6.5%	6.7%	6.8%	6.7%	6.7%
Total average compensation per job (dollars)								
Farm compensation	0.2%	0.2%	0.2%	0.2%	0.1%	0.1%	0.2%	0.1%
Nonfarm compensation	99.8%	99.8%	99.8%	99.8%	99.9%	99.9%	99.8%	99.9%
Private compensation	83.5%	83.5%	83.8%	84.1%	82.6%	82.7%	82.3%	81.8%
Forestry, fishing, related activities, and other 2/	--	--	0.5%	0.5%	0.5%	0.5%	0.5%	0.5%
Mining	--	--	0.2%	0.3%	0.3%	0.2%	0.2%	0.3%
Utilities	--	--	--	--	--	--	--	--
Construction	2.5%	2.4%	2.4%	2.2%	2.2%	2.0%	2.0%	1.9%
Manufacturing	31.3%	29.1%	30.3%	30.2%	29.8%	29.1%	29.4%	27.5%
Durable goods manufacturing	21.2%	19.6%	21.0%	20.8%	20.7%	20.6%	21.5%	20.7%
Nondurable goods manufacturing	10.1%	9.6%	9.3%	9.4%	9.0%	8.5%	7.9%	6.8%
Wholesale trade	--	--	--	--	--	--	--	--
Retail trade	9.9%	10.0%	10.0%	9.4%	9.3%	9.2%	9.2%	9.0%
Transportation and warehousing	3.6%	3.9%	3.2%	2.9%	2.8%	2.8%	3.0%	2.8%
Information	2.2%	2.2%	2.6%	2.2%	2.4%	2.3%	2.4%	2.2%
Finance and insurance	1.5%	1.6%	1.6%	1.5%	1.5%	2.1%	2.2%	2.4%
Real estate and rental and leasing	0.3%	0.3%	0.3%	0.3%	0.3%	0.3%	0.3%	0.4%
Professional and technical services	--	--	--	--	--	--	--	--
Management of companies and enterprises	--	--	--	--	--	--	--	--
Administrative and waste services	3.5%	3.1%	2.6%	--	--	2.7%	2.7%	2.8%
Educational services	0.9%	0.8%	0.7%	0.8%	0.9%	0.9%	1.0%	1.0%
Health care and social assistance	10.0%	11.5%	11.5%	12.3%	12.6%	12.8%	13.5%	15.5%
Arts, entertainment, and recreation	0.5%	0.5%	0.5%	0.4%	--	0.5%	0.5%	0.5%
Accommodation and food services	4.5%	4.5%	4.3%	4.2%	3.8%	3.4%	3.7%	3.7%
Other services, except public administration	3.1%	3.3%	3.2%	3.3%	3.2%	3.3%	3.2%	3.2%
Government and government enterprises	16.2%	16.2%	16.0%	15.7%	17.3%	17.2%	17.5%	18.0%
Federal, civilian	1.9%	2.0%	2.0%	2.0%	2.1%	2.0%	2.0%	2.0%
Military	0.2%	0.2%	0.3%	0.4%	0.4%	0.4%	0.4%	0.4%
State and local	14.1%	14.0%	13.7%	13.4%	14.8%	14.8%	15.2%	15.6%
State government	--	--	--	--	2.3%	2.5%	2.5%	2.6%
Local government	--	--	--	--	12.5%	12.3%	12.7%	13.0%

Compensation by NAICS Industry 2001-2008 (Table CA06)

Source: Bureau of Economic Analysis

<http://www.bea.gov/regional/index.htm>

	2001	2002	2003	2004	2005	2006	2007	2008	Percent Change 2001-2008
Michigan state total [26000]									
Compensation of employees, received (\$000)	207,593,257	211,572,296	222,110,713	221,968,226	225,913,377	226,580,461	229,997,400	229,302,727	10.5%
Total wage and salary disbursements	171,951,197	172,390,345	175,601,157	179,228,227	182,521,256	184,145,631	187,179,084	186,196,789	8.3%
Total supplements to wages and salaries	35,642,060	39,181,951	46,509,556	42,739,999	43,392,121	42,434,830	42,818,316	43,105,938	20.9%
Employer contrib. for employee pension & insur. funds	22,271,430	25,786,696	32,887,671	28,663,471	28,932,795	27,675,901	27,981,588	28,285,086	27.0%
Employer contributions for government social insurance	13,370,630	13,395,255	13,621,885	14,076,528	14,459,326	14,758,929	14,836,728	14,820,852	10.8%
Total average compensation per job (dollars)	44,471	46,145	49,157	49,306	50,348	51,197	52,592	53,784	20.9%
Farm compensation	595,518	629,328	522,108	592,214	548,337	565,047	731,862	649,115	9.0%
Nonfarm compensation	206,997,739	210,942,968	221,588,605	221,376,012	225,365,040	226,015,414	229,265,538	228,653,612	10.5%
Private compensation	176,000,493	178,596,484	187,855,524	186,061,567	188,336,498	188,695,534	191,310,690	189,629,306	7.7%
Forestry, fishing, related activities, and other 2/	164,108	156,244	161,324	192,870	185,989	189,204	190,896	199,399	21.5%
Mining	409,204	356,927	378,436	408,116	428,961	452,781	465,612	493,909	20.7%
Utilities	1,833,458	1,943,265	2,069,650	2,063,184	2,111,157	2,286,092	2,400,350	2,297,879	25.3%
Construction	10,802,091	10,626,623	10,264,767	10,495,110	10,585,703	10,183,473	9,891,377	9,471,144	-12.3%
Manufacturing	51,364,025	51,039,757	56,880,939	50,428,959	48,505,281	47,115,561	47,128,570	44,280,549	-13.8%
Durable goods manufacturing	42,292,273	41,812,423	47,274,822	40,917,138	39,183,093	37,897,490	37,928,803	35,076,108	-17.1%
Nondurable goods manufacturing	9,071,752	9,227,334	9,606,117	9,511,821	9,322,188	9,218,071	9,199,767	9,204,441	1.5%
Wholesale trade	10,725,593	10,646,881	10,867,500	11,140,621	11,545,258	11,783,676	12,086,642	12,382,812	15.5%
Retail trade	14,085,592	14,432,105	14,619,958	14,816,433	14,780,693	14,675,440	14,733,714	14,692,784	4.3%
Transportation and warehousing	5,589,436	5,670,585	5,849,082	6,126,384	6,243,564	6,094,845	6,343,384	6,163,066	10.3%
Information	4,122,743	4,123,235	4,263,154	4,333,498	4,224,730	4,261,967	4,368,728	4,305,897	4.4%
Finance and insurance	8,944,809	9,551,168	10,022,761	10,139,385	10,579,083	10,905,138	10,971,040	10,885,684	21.7%
Real estate and rental and leasing	1,910,564	2,037,545	1,998,552	2,083,747	2,134,668	2,102,090	2,134,808	2,118,917	10.9%
Professional and technical services	18,832,398	18,521,283	18,602,502	18,721,782	19,704,325	20,020,215	20,528,503	20,904,359	11.0%
Management of companies and enterprises	6,619,493	6,339,230	6,737,691	7,522,341	7,304,445	6,992,358	6,970,436	6,855,480	3.6%
Administrative and waste services	8,314,650	8,674,311	9,027,364	9,537,919	10,391,903	10,434,270	10,128,586	9,815,775	18.1%
Educational services	1,490,706	1,658,490	1,846,830	2,036,936	2,157,913	2,255,360	2,440,224	2,566,919	72.2%
Health care and social assistance	18,345,840	19,830,475	21,041,765	22,231,345	23,590,617	24,855,184	25,903,976	27,350,843	49.1%
Arts, entertainment, and recreation	1,752,192	1,913,230	1,939,507	1,992,776	2,016,062	2,142,788	2,175,456	2,281,659	30.2%
Accommodation and food services	4,952,713	5,137,277	5,270,654	5,517,088	5,580,223	5,633,096	5,936,774	5,893,121	19.0%
Other services, except public administration	5,740,878	5,937,853	6,013,088	6,273,073	6,265,923	6,311,996	6,511,614	6,669,110	16.2%
Government and government enterprises	30,997,246	32,346,484	33,733,081	35,314,445	37,028,542	37,319,880	37,954,848	39,024,306	25.9%
Federal, civilian	3,807,550	4,017,808	4,172,155	4,491,644	4,597,745	4,756,271	4,957,069	4,974,409	30.6%
Military	453,489	574,930	785,500	837,753	921,205	904,129	938,641	999,785	120.5%
State and local	26,736,207	27,753,746	28,775,426	29,985,048	31,509,592	31,659,480	32,059,138	33,050,112	23.6%
State government	7,916,856	8,140,060	8,021,780	8,061,386	8,858,206	9,581,283	9,688,173	10,128,766	27.9%
Local government	18,819,351	19,613,686	20,753,646	21,923,662	22,651,386	22,078,197	22,370,965	22,921,346	21.8%

Compensation by NAICS Industry 2001-2008 (Table CA06)

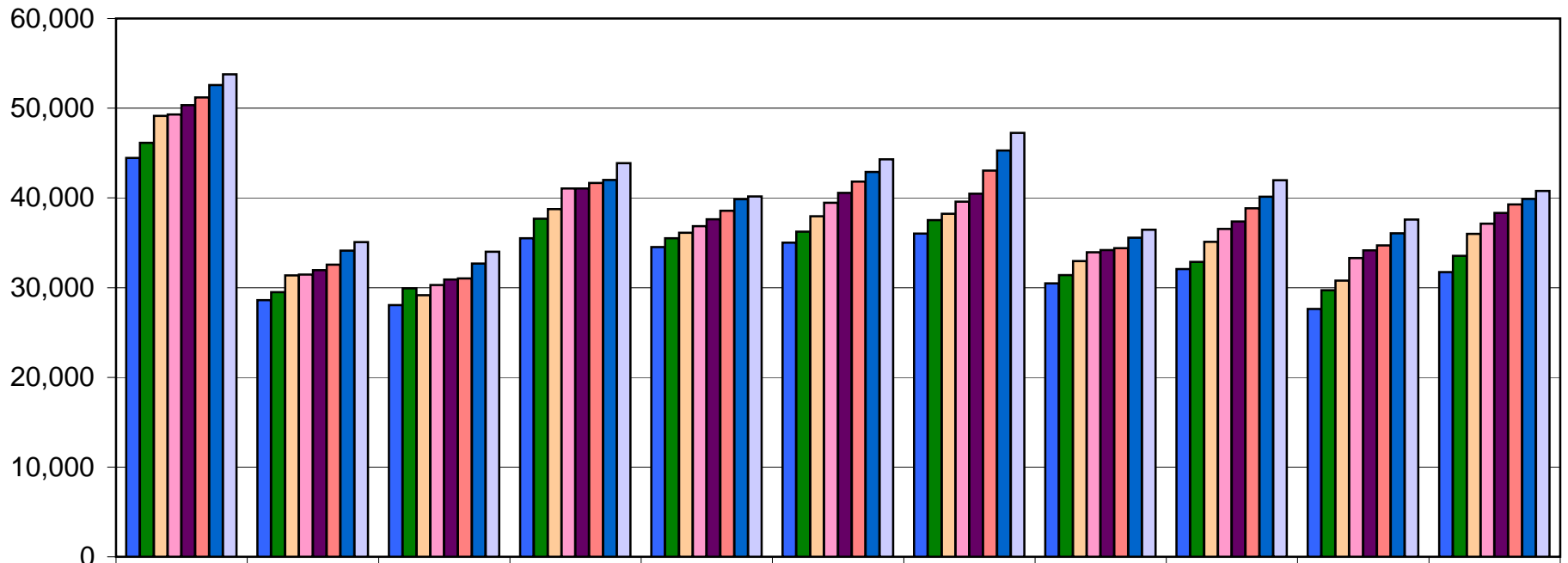
Source: Bureau of Economic Analysis

Footnotes: <http://www.bea.gov/regional/docs/footnotes.cfm?tablename=CA06N>

	Percent of Total Compensation							
	2001	2002	2003	2004	2005	2006	2007	2008
Michigan state total [26000]								
Compensation of employees, received (\$000)	100.0%	100.0%	100.0%	100.0%	100.0%	100.0%	100.0%	100.0%
Total wage and salary disbursements	82.8%	81.5%	79.1%	80.7%	80.8%	81.3%	81.4%	81.2%
Total supplements to wages and salaries	17.2%	18.5%	20.9%	19.3%	19.2%	18.7%	18.6%	18.8%
Employer contrib. for employee pension & insur. funds	10.7%	12.2%	14.8%	12.9%	12.8%	12.2%	12.2%	12.3%
Employer contributions for government social insurance	6.4%	6.3%	6.1%	6.3%	6.4%	6.5%	6.5%	6.5%
Total average compensation per job (dollars)								
Farm compensation	0.3%	0.3%	0.2%	0.3%	0.2%	0.2%	0.3%	0.3%
Nonfarm compensation	99.7%	99.7%	99.8%	99.7%	99.8%	99.8%	99.7%	99.7%
Private compensation	84.8%	84.4%	84.6%	83.8%	83.4%	83.3%	83.2%	82.7%
Forestry, fishing, related activities, and other 2/	0.1%	0.1%	0.1%	0.1%	0.1%	0.1%	0.1%	0.1%
Mining	0.2%	0.2%	0.2%	0.2%	0.2%	0.2%	0.2%	0.2%
Utilities	0.9%	0.9%	0.9%	0.9%	0.9%	1.0%	1.0%	1.0%
Construction	5.2%	5.0%	4.6%	4.7%	4.7%	4.5%	4.3%	4.1%
Manufacturing	24.7%	24.1%	25.6%	22.7%	21.5%	20.8%	20.5%	19.3%
Durable goods manufacturing	20.4%	19.8%	21.3%	18.4%	17.3%	16.7%	16.5%	15.3%
Nondurable goods manufacturing	4.4%	4.4%	4.3%	4.3%	4.1%	4.1%	4.0%	4.0%
Wholesale trade	5.2%	5.0%	4.9%	5.0%	5.1%	5.2%	5.3%	5.4%
Retail trade	6.8%	6.8%	6.6%	6.7%	6.5%	6.5%	6.4%	6.4%
Transportation and warehousing	2.7%	2.7%	2.6%	2.8%	2.8%	2.7%	2.8%	2.7%
Information	2.0%	1.9%	1.9%	2.0%	1.9%	1.9%	1.9%	1.9%
Finance and insurance	4.3%	4.5%	4.5%	4.6%	4.7%	4.8%	4.8%	4.7%
Real estate and rental and leasing	0.9%	1.0%	0.9%	0.9%	0.9%	0.9%	0.9%	0.9%
Professional and technical services	9.1%	8.8%	8.4%	8.4%	8.7%	8.8%	8.9%	9.1%
Management of companies and enterprises	3.2%	3.0%	3.0%	3.4%	3.2%	3.1%	3.0%	3.0%
Administrative and waste services	4.0%	4.1%	4.1%	4.3%	4.6%	4.6%	4.4%	4.3%
Educational services	0.7%	0.8%	0.8%	0.9%	1.0%	1.0%	1.1%	1.1%
Health care and social assistance	8.8%	9.4%	9.5%	10.0%	10.4%	11.0%	11.3%	11.9%
Arts, entertainment, and recreation	0.8%	0.9%	0.9%	0.9%	0.9%	0.9%	0.9%	1.0%
Accommodation and food services	2.4%	2.4%	2.4%	2.5%	2.5%	2.5%	2.6%	2.6%
Other services, except public administration	2.8%	2.8%	2.7%	2.8%	2.8%	2.8%	2.8%	2.9%
Government and government enterprises	14.9%	15.3%	15.2%	15.9%	16.4%	16.5%	16.5%	17.0%
Federal, civilian	1.8%	1.9%	1.9%	2.0%	2.0%	2.1%	2.2%	2.2%
Military	0.2%	0.3%	0.4%	0.4%	0.4%	0.4%	0.4%	0.4%
State and local	12.9%	13.1%	13.0%	13.5%	13.9%	14.0%	13.9%	14.4%
State government	3.8%	3.8%	3.6%	3.6%	3.9%	4.2%	4.2%	4.4%
Local government	9.1%	9.3%	9.3%	9.9%	10.0%	9.7%	9.7%	10.0%

Average Compensation Per Job

Source: Bureau of Economic Analysis, Compensation by NAICS Industry, Table CA06



	Michigan	Antrim	Benzie	Charlevoix	Emmet	Grand Traverse	Kalkaska	Leelanau	Manistee	Missaukee	Wexford
2001	44,471	28,611	28,053	35,498	34,524	35,001	36,027	\$30,470	\$32,061	\$27,625	\$31,737
2002	46,145	29,508	29,914	37,666	35,504	36,243	37,541	\$31,393	\$32,859	\$29,714	\$33,534
2003	49,157	31,359	29,167	38,758	36,119	37,958	38,219	\$32,948	\$35,103	\$30,789	\$36,000
2004	49,306	31,457	30,283	41,061	36,865	39,460	39,578	\$33,937	\$36,537	\$33,292	\$37,142
2005	50,348	31,960	30,901	41,041	37,624	40,561	40,476	\$34,195	\$37,369	\$34,163	\$38,315
2006	51,197	32,562	31,039	41,658	38,560	41,805	43,041	\$34,410	\$38,852	\$34,709	\$39,288
2007	52,592	34,109	32,690	41,990	39,843	42,880	45,280	\$35,568	\$40,126	\$36,046	\$39,901
2008	53,784	35,078	33,990	43,872	40,173	44,315	47,247	\$36,463	\$41,975	\$37,588	\$40,767

Average Compensation Per Job as a Percent of Michigan's Average Compensation Per Job

Source: Bureau of Economic Analysis, Compensation by NAICS Industry, Table CA06

